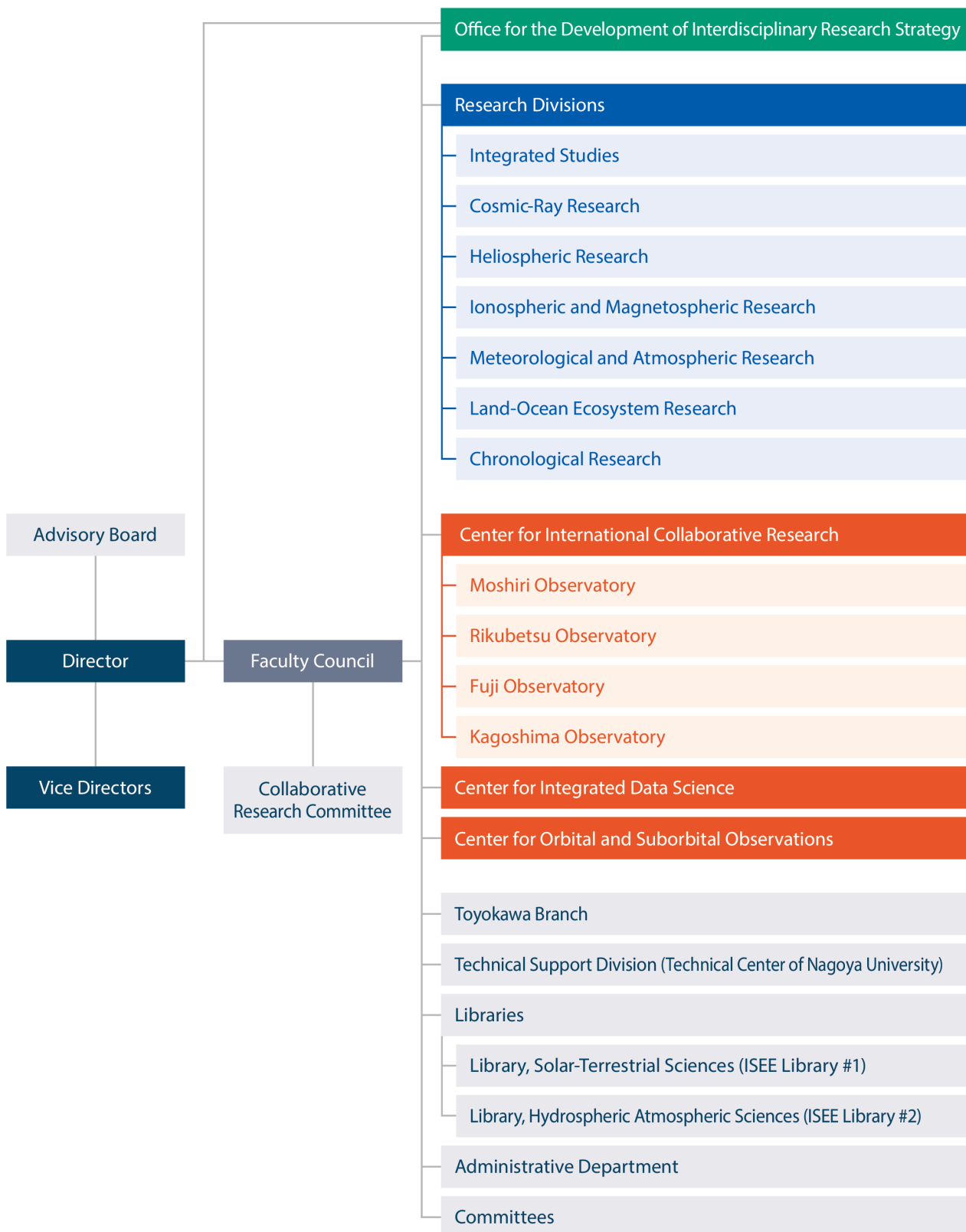


# 1. History



## 2. Organization



# 3. Staff

<b>Director</b>	Kanya Kusano	April 1, 2022–March 31, 2023
<b>Vice Director</b>	Kazuo Shiokawa	★: Concurrent post ▲: Left the Institute in the 2022 academic year
<b>Vice Director</b>	Nobuhiro Takahashi	○: Joined the Institute in the 2022 academic year *: Belongs to Institute for Advanced Research Section

## Division for Integrated Studies

Professor	Kanya Kusano
Professor	Yoshizumi Miyoshi (★)
Associate Professor	Satoshi Masuda
Associate Professor	Takayuki Umeda (★)
Assistant Professor	Akimasa Ieda
Designated Assistant Professor	Haruhisa Iijima
Designated Assistant Professor	Yoshiki Hatta ○
Designated Assistant Professor	Hisashi Hayakawa *
Designated Assistant Professor	Yumi Bamba *▲
JSPS Postdoctoral Fellowships for Research in Japan (Standard)	Sandeep Kumar
JSPS Postdoctoral Fellowships for Research in Japan (Standard)	Shreedevi Radhakrishna Porunakatu ○
Technical Assistant	Keitaro Matsumoto ○▲

## Division for Cosmic-Ray Research

Professor	Yoshitaka Itow
Professor	Hiroyasu Tajima (★)
Associate Professor	Yutaka Matsubara ▲
Associate Professor	Fusa Miyake
Associate Professor	Shingo Kazama (★) **
** Kobayashi-Maskawa Institute for the Origin of Particles and the Universe	
Designated Associate Professor	Kazutaka Yamaoka (★)
Lecturer	Akira Okumura
Assistant Professor	Hiroaki Menjo
Designated Assistant Professor	Mitsunari Takahashi
JSPS Postdoctoral Fellowships for Research in Japan (Standard)	Ken Ohashi ○▲
JSPS Postdoctoral Fellowships for Research in Japan (Standard)	Masatoshi Kobayashi
Designated Technical Staff	Shozo Ohta
Technical Assistant	Yasuko Ito ○
Technical Assistant	Ayano Nagata ○▲
Technical Assistant	Kazuhiro Furuta

## Division for Heliospheric Research

Professor	Munetoshi Tokumaru ▲
Associate Professor	Kazumasa Iwai
Assistant Professor	Ken-ichi Fujiki

## Division for Ionospheric and Magnetospheric Research

Professor	Masafumi Hirahara
Professor	Kazuo Shiokawa (★)
Associate Professor	Yuichi Otsuka
Associate Professor	Satonori Nozawa
Associate Professor	Masahito Nosé ▲
Associate Professor	Nozomu Nishitani (★)
Associate Professor	Claudia Martinez-Calderon (★)
Lecturer	Shin-ichiro Oyama
Designated Assistant Professor	Naritoshi Kitamura ○
Designated Assistant Professor	Atsuki Shinbori
JSPS Postdoctoral Fellowships for Research in Japan (Standard)	Shibaji Chakraborty ○

## Division for Meteorological and Atmospheric Research

Professor	Akira Mizuno
Professor	Michihiro Mochida
Professor	Nobuhiro Takahashi (★)
Professor	Kazuhisa Tsuboki (★)
Associate Professor	Tomoo Nagahama
Associate Professor	Hirohiko Masunaga
Associate Professor	Taro Shinoda (★)
Assistant Professor	Sho Ohata *
Assistant Professor	Taku Nakajima
Designated Assistant Professor	Shinnosuke Ishizuka *
Researcher	Ruichen Zhou
Researcher	Fumie Furuzawa
Researcher	Gemma Mizoguchi ▲
Researcher	Sonia Afsana ○▲
JSPS Postdoctoral Fellowships for Research in Japan (Standard)	Yunhua Chang ▲
Technical Assistant (Research Support Facilitator)	Kazuji Suzuki

**Division for Land–Ocean Ecosystem Research**

Professor	Tetsuya Hiyama
Professor	Joji Ishizaka (✳)
Associate Professor	Hidenori Aiki
Associate Professor	Naoyuki Kurita
Lecturer	Hatsuki Fujinami
Assistant Professor	Yoshihisa Mino
Designated Assistant Professor	Masayuki Kondo ▲
Researcher	Nao Esashi ○▲
Researcher	Hironari Kanamori
Researcher	Yuto Tashiro
Researcher	Yoshiki Fukutomi
Research Institution Researcher	HanumanThu Himabindu ▲

**Division for Chronological Research**

Professor	Hiroyuki Kitagawa
Professor	Masayo Minami
Associate Professor	Takenori Kato (✳)
Assistant Professor	Hirohisa Oda
Researcher	Masako Yamane ▲
Research Institution Researcher	Ryusei Kuma ▲
Research Institution Researcher	Satoshi Sasaki ○
Designated Technical Staff	Masami Nishida
Designated Technical Staff	Yuriko Hibi

**Office for the Development of Interdisciplinary Research Strategy**

Office Manager • Professor	Kanya Kusano (✳)
Professor	Nobuhiro Takahashi (✳)
Professor	Kazuo Shiokawa (✳)
Professor	Yoshizumi Miyoshi (✳)
Associate Professor	Claudia Martinez-Calderon (✳)

**Center for International Collaborative Research**

Director • Professor	Kazuo Shiokawa
Professor	Joji Ishizaka
Professor	Munetoshi Tokumaru (✳) ▲
Professor	Tetsuya Hiyama (✳)
Professor	Akira Mizuno (✳)
Professor	Masayo Minami (✳)
Professor	Michihiro Mochida (✳)
Designated Professor (Cross Appointment)	K. D. Leka
Designated Professor (Cross Appointment)	Lynn Marie Kistler
Associate Professor	Nozomu Nishitani
Associate Professor	Claudia Martinez-Calderon
Associate Professor	Naoyuki Kurita (✳)
Associate Professor	Satonori Nozawa (✳)
Lecturer	Hatsuki Fujinami (✳)
Assistant Professor	Hiroaki Menjo (✳)
Designated Assistant Professor	Masafumi Shoji

**Foreign Visiting Research Fellow**

Apr. 3 – Jul. 2, 2022	Jyrki Kalervo Manninen
Apr. 16 – Jul. 15, 2022	Rangaiah Kariyappa
Jun. 22 – Sep. 20, 2022	HajiHossein Azizi
Nov. 1, 2022– Jan. 31, 2023	Rumi Nakamura
Nov. 18, 2022 – Jan. 20, 2023	Jong-Dao Jou
Jan. 30 – May 24, 2023	Po-Hsiung Lin
Feb. 1 – Apr. 30, 2023	Pavlo Ponomarenko
Feb. 12 – May 13, 2023	Pekka Tapani Verronen
Mar. 7 – Jun. 2, 2023	Vyacheslav Anatolevich Piliipenko

**Center for Integrated Data Science**

Director • Professor	Yoshizumi Miyoshi
Professor	Kazuhisa Tsuboki
Professor	Joji Ishizaka (✳)
Professor	Yoshitaka Itow (✳)
Professor	Kanya Kusano (✳)
Associate Professor	Takayuki Umeda
Associate Professor	Takenori Kato
Associate Professor	Hidenori Aiki (✳)
Associate Professor	Masahito Nosé (✳)▲
Associate Professor	Satoshi Masuda (✳)
Associate Professor	Hirohiko Masunaga (✳)
Designated Associate Professor	Tomoaki Hori
Assistant Professor	Akimasa Ieda (✳)
Designated Assistant Professor	Sachie Kanada
Designated Assistant Professor	Satoko Nakamura *
Designated Assistant Professor	Takuma Matsumoto ○
Designated Assistant Professor	Chae-Woo Jun
Designated Assistant Professor	YunHee Kang
Designated Assistant Professor	Atsuki Shinbori (✳)
Researcher	Masaya Kato
Designated Technical Staff	Mariko Kayaba
Designated Technical Staff	Nanako Hirata
Designated Technical Staff	Asayo Maeda
Designated Technical Staff	Kingi Morikawa

**Center for Orbital and Suborbital Observations**

Director • Professor	Nobuhiro Takahashi
Professor	Hiroyasu Tajima
Professor	Joji Ishizaka (✳)
Professor	Kazuhisa Tsuboki (✳)
Professor	Masafumi Hirahara (✳)
Designated Professor	Jong-Dao Jou ○▲
Designated Professor	Masataka Murakami
Associate Professor	Taro Shinoda
Associate Professor	Hidenori Aiki (✳)
Designated Associate Professor	Kazutaka Yamaoka
Assistant Professor	Sho Ohata (✳)*
Designated Assistant Professor	Takeharu Kouketsu ▲
Technical Assistant	Ryuta Kiuchi ○▲

**Visiting Academic Staff/Visiting Faculty Members**

Visiting Professor	Shinsuke Imada
Visiting Professor	Yoshiya Kasahara
Visiting Professor	Tomo'omi Kumagai
Visiting Professor	Yoshikatsu Kuroda ▲
Visiting Professor	Yoko Kokubu ▲
Visiting Professor	Iku Shinohara
Visiting Professor	Nobuo Sugimoto
Visiting Professor	Kanako Seki
Visiting Professor	Toru Tamura ▲
Visiting Professor	Hotaek Park
Visiting Associate Professor	Fumio Abe
Visiting Associate Professor	Yasunobu Ogawa
Visiting Associate Professor	Shinji Saito
Visiting Associate Professor	Daikou Shiota
Visiting Associate Professor	Hiroki Mizuochi
Visiting Associate Professor	Kikuko Miyata ▲
Visiting Associate Professor	Shoichiro Yokota
Visiting Associate Professor	Shigeyuki Wakagi
	Shun Ohishi
(Emeritus Professor)	Yutaka Mtsumi

---

**Foreign Visiting Cooperation Researcher**


---

Jun. 26, 2021 – Jun. 25, 2022	Xiaolong Li	Oct. 17 – Oct. 27, 2022	Wan Hong
Apr. 1 – Oct. 31, 2022	Bindu H. Hima	Oct. 19, 2022 – Aug. 31, 2023	Rui Chen
Apr. 1, 2022 – Mar. 31, 2023	XiangXiang Yan	Oct. 26 – Nov. 16, 2022	Wee Cheah
Apr. 16 – Jul. 15, 2022	Adithya H.N.	Nov. 1, 2022 – Jan. 31, 2023	Nilesh Arvind Chauhan
May 1 – Jul. 10, 2022	Mengesha Cherkos Alemayehu	Nov. 1 – Nov. 13, 2022	Jong-Dao Jou
May 11 – Aug.15, 2022	Francesc Junyent	Nov. 10 – Dec. 5, 2022	Andrzej Zbingniew Rakowski
May 11 – Aug.15, 2022	Jim George	Nov. 12 – Nov. 23, 2022	Bruce Tsurutani
May 11 – Aug.15, 2022	Corby Tay Thompson	Nov. 12 – Nov. 26, 2022	Brian Thomas Welsch
May 11 – Aug.15, 2022	Eun Yeol Kim	Nov. 13 – Nov. 17, 2022	James Crawford
May 11 – Aug.15, 2022	Warittha Panasawatwong	Nov. 13 – Nov. 17, 2022	Ilya Usoskin
May 11 – Aug.15, 2022	Theresa Marie Lincheck	Nov. 14 – Nov. 19, 2022	Ivana Kolmašová
May 11 – Aug.15, 2022	Erin Mary Dougherty	Nov. 14 – Nov. 19, 2022	Benjamin Grison
Jun. 1 – Aug.15, 2022	Michael Monroe Bell	Nov. 14 – Nov. 19, 2022	Ulrich Taubenschuss
Jun. 11 – Aug.15, 2022	Brenda Dolan Cabel	Nov. 15 – Nov. 17, 2022	Natchimuthukonar Gopalswamy
Jun. 11 – Aug.15, 2022	Katherine Louise Ackerman	Nov. 15 – Nov. 17, 2022	Go Iwahana
Jun. 11 – Aug.15, 2022	Mya Jocelyn Sears	Nov. 18, 2022 – Feb. 15, 2023	Chukwuma Moses Anoruo
Jun. 13 – Jul. 29, 2022	Andrew Oke-'Ovie Akala	Nov. 23 – Nov. 30, 2022	Manabu Shimoyama
Jun. 24 – Oct. 25, 2022	Po-Hsiung Lin	Nov. 27 – Dec. 4, 2022	Rangaiah Kariyappa
Jun. 27 – Jul. 6, 2022	Bernard V. Jackson	Nov. 27 – Dec. 1, 2022	Wai-Leong Teh
Jul. 11 – Jul. 22, 2022	Takuya Hara	Dec. 3, 2022 – Feb. 28, 2023	Wellen Rukundo
Jul. 11 – Aug.16, 2022	Nicole Rocque Marquette	Dec. 4, 2022 – Jan. 20, 2023	Maurya Ajeet Kumar
Jul. 11 – Aug.16, 2022	Kelly Marie Nunez Ocasio	Dec. 7, 2022 – Mar. 6, 2023	Rahul Rathi
Jul. 11 – Aug.16, 2022	Chaehyeon Nam	Jan. 10 – Jan. 29, 2023	Po-Hsiung Lin
Jul. 22 – Aug.15, 2022	Venkatachalam Chandrasekaran	Jan. 31 – Mar. 1, 2023	Samuel Krucker
Aug. 4 – Aug.16, 2022	Mateo Enriq Lovato	Feb. 12 – Mar. 12, 2023	Hermann Opgenoorth
Sep. 8 – Sep.16, 2022	Amore Nel	Feb. 15 – Feb. 27, 2023	Kevin Krieger
Sep. 8 – Sep.16, 2022	John Bosco Habarulema	Mar. 31, 2023 – Mar. 31, 2024	Yaru Zhao
Sep. 8 – Sep.16, 2022	Zama Thobeka Katamzi-Joseph		
Sep. 12 – Dec.10, 2022	Onyinye Gift Nwankwo		
Sep. 24 – Oct. 5, 2022	Ulrike Maria Langematz		
Sep. 26 – Oct.12, 2022	Konstantin Schaar		
Sep. 27 – Oct. 5, 2022	Tobias Christian Spiegl		
Oct. 4 – Dec. 27, 2022	Veera Kumar Maheswaran		
Oct. 5 – Dec. 20, 2022	Pankaj Soni		
Oct. 12 – Dec. 7, 2022	Venkata Ratnam Devanaboyina		
Oct. 13 – Nov. 16, 2022	Ravindra Pratap Singh		

---

**Technical Center of Nagoya University**


---

Senior Technician	Akiko Ikeda
Senior Technician	Yasusuke Kojima
Senior Technician	Haruya Minda
Technician	Wataru Okamoto
Technician	Tetsuya Kawabata
Technician	Tomonori Segawa
Technician	Yoshiyuki Hamaguchi
Technician	Ryuji Fujimori
Technician	Yasushi Maruyama
Technician	Takayuki Yamasaki
Technician	Yuka Yamamoto
Assistant Technician	Takumi Adachi
Assistant Technician	Moeto Kyushima

---

**Administration Department**


---

Director, Administration Department	Satoshi Furuhashi ▲
General Affairs Division	
Manager, General Affairs Division	Masao Yamamori ○
Specialist, General Affairs Section	Hideaki Yano ▲
Section Head, General Affairs Section	Takamasa Sato
Section Head, General Affairs Section	Noriaki Tonouchi ○
Section Head, Personnel Affairs Section	Yohei Sato ▲
Section Head, Budget Planning Section	Mirei Miyao
Leader, General Affairs Section	Risa Oosawa ○
Leader, Personnel Affairs Section	Yoshikazu Akamatsu ▲
Administrator	Honami Ishizaki ○
Administrator	Junpei Okada
Administrator	Asana Goto ▲
Administrator	Megumi Goto ▲
Administrator	Tomoka Shibata ○
Administrator	Kahori Nishi ○
Designated Supervisor	Tadashi Tsuboi ▲
Deputy Manager, Research Funding Division, Research Cooperation Department	Toshiyuki Yokoi ○

---

**Toyokawa Branch**


---

Designated Technical Staff	Kayoko Asano
Technical Assistant (Research Support Facilitator)	Yasuo Kato

## 4. Committee of Other Organizations

### Committee of Other Organizations

Contact Post	Job Title	Organizations	Name of Committee / Title
Tetsuya Hiyama	Professor	International Arctic Science Committee (IASC)	Terrestrial Working Group (TWG) member
Joji Ishizaka	Professor	North Pacific Marine Science Organization (PICES)	Co-Chair of Advisory Panel for a CREAMS/PICES Program in East Asian Marginal Seas
Joji Ishizaka	Professor	Northwest Pacific Action Plan (NOWPAP)	Focal Point of Center for Special Monitoring and Coastal Environmental Assessment Regional Active Center (CEARAC)
Yoshitaka Itow	Professor	Institute of Particle and Nuclear Studies, KEK	J-Parc Program Advisory Committee member
Hiroyuki Kitagawa	Professor	Geosciences	Editor
Yoshizumi Miyoshi	Professor	EISCAT Scientific Association	Strategy Group on the Future of EISCAT member
Yoshizumi Miyoshi	Professor	Committee on Space Research (COSPAR)	Chair of Panel on Radiation Belt Environment Modeling
Yoshizumi Miyoshi	Professor	Committee on Space Research (COSPAR)	Task Group on Establishing a Constellation of Small Satellites (TGSS) Sub-Group for Radiation Belt member
Yoshizumi Miyoshi	Professor	Scientific Committee on Solar-Terrestrial Physics (SCOSTEP)	Bureau member
Yoshizumi Miyoshi	Professor	National Science Foundation/ Geospace Environment Modeling (NSF/GEM)	Steering Committee member
Yoshizumi Miyoshi	Professor	Japan GeoScience Union	Vice President, Space Planetary Section
Yoshizumi Miyoshi	Professor	Annales Geophysicae	Editor
Yoshizumi Miyoshi	Professor	Earth and Planetary Physics	Editor
Yoshizumi Miyoshi	Professor	Scientific Reports	Editorial Board member
Yoshizumi Miyoshi	Professor	Frontiers in Astronomy and Space Sciences	Associate Editor
Akira Mizuno	Professor	Network for the Detection of Atmospheric Composition Change	Steering Committee member (Japanese Co-Representative)
Michihiro Mochida	Professor	International Commission on Atmospheric Chemistry and Global Pollution (iCACGP)	Commission member
Michihiro Mochida	Professor	Atmospheric Environment	Editorial Advisory Board member
Kazuo Shiokawa	Professor	Scientific Committee on Solar-Terrestrial Physics (SCOSTEP)	President
Hiroyasu Tajima	Professor	Institute of Particle and Nuclear Studies, KEK	B-factory Programme Advisory Committee member
Hiroyasu Tajima	Professor	Progress of Theoretical and Experimental Physics	Editor



#### 4. Committee of Other Organizations

Contact Post	Job Title	Organizations	Name of Committee / Title
Hiroyasu Tajima	Professor	Progress of Theoretical and Experimental Physics	Editorial Board member
Nobuhiro Takahashi	Professor	National Aeronautics and Space Administration (NASA)	Global Precipitation Measurement (GPM) Joint Precipitation Science Team (JPST) member
Nobuhiro Takahashi	Professor	National Aeronautics and Space Administration (NASA)	Aerosol and Cloud, Convection and Precipitation (ACCP) Science and Application Transition Team (SATT) member
Nobuhiro Takahashi	Professor	National Aeronautics and Space Administration (NASA)	Aerosol and Cloud, Convection and Precipitation (ACCP) Algorithm Working Group (AWG) member
Nobuhiro Takahashi	Professor	European Space Agency (ESA)	Member, Joint Mission Advisory Group for EarthCARE
Hirohiko Masunaga	Associate Professor	National Aeronautics and Space Administration (NASA)	Atmosphere Observing System (AOS), Science and Applications Team (SAT), Algorithm Working Group (AWG) member
Hirohiko Masunaga	Associate Professor	World Climate Research Programme (WCRP) Global Energy and Water cycle Exchanges (GEWEX)	GEWEX Data and Analysis Panel (GDAP) member
Hirohiko Masunaga	Associate Professor	National Aeronautics and Space Administration (NASA) and JAXA	Joint Precipitation Measurement Mission Science Team member
Nozomu Nishitani	Associate Professor	Super Dual Auroral Radar Network (SuperDARN)	Vice chair, Executive Council
Nozomu Nishitani	Associate Professor	Earth, Planets and Space (EPS)	Guest editor for the special issue of 20th Anniversary Issue: Earth, Planetary, and Space Sciences in the Next Decade
Masahito Nosé	Associate Professor	International Association of Geomagnetism and Aeronomy (IAGA)	Chair, Division V
Masahito Nosé	Associate Professor	International Union of Geodesy and Geophysics	Resolution Committee member
Masahito Nosé	Associate Professor	Earth, Planets and Space (EPS)	Vice editors-in-chief
Masahito Nosé	Associate Professor	Polar Data Journal	Editorial Board member
Satonori Nozawa	Associate Professor	EISCAT Scientific Association	Council member
Yuichi Otsuka	Associate Professor	Committee on Space Research (COSPAR)	Chair, Sub-Commission C1: The Earth's Upper Atmosphere and Ionosphere
Yuichi Otsuka	Associate Professor	AGU: Geophysical Research Letters	Editor
Yuichi Otsuka	Associate Professor	Czech Science Foundation	Reviewer
Yuichi Otsuka	Associate Professor	Journal of Astronomy and Space Sciences	Editor
Hatsuki Fujinami	Lecturer	Climate and Ocean: Variability, Predictability and Change (CLIVAR)/ Global Energy and Water cycle Exchanges (GEWEX)	Monsoons Panel Asian-Australian Monsoon Working Group member

---

## 5. Joint Research Programs

---

The ISEE was certified by the MEXT of Japan as a joint usage/research center for the fourth medium-term goal/planning period (FY2022 to FY2027) of national universities on October 29, 2021. During this period, we will promote and perform collaborative research on space–Earth Environmental Sciences with researchers from universities and institutes outside the ISEE as an international hub connecting diverse fields to contribute towards solving global environmental issues affecting humankind and the development of human society by understanding the Earth, Sun, and space as a single system through the integration of space and Earth science and by elucidating the mechanisms and interrelationships of diverse phenomena occurring in the system.

The following 17 categories of open-call joint research programs were promoted using ground, ocean, aircraft, and satellite observations, laboratory experiments, data analysis, numerical simulations, etc., during FY2022: 00) ISEE International symposium, 01) International joint research, 02) Invited foreign researcher joint research, 03) International workshop, 04) General joint research, 05) Encouraged joint research for graduate students, 06) Research meetings, 07) Computing infrastructure, 08) Database management, 09) Accelerator mass spectrometry analysis, 10) Carbon-14 analysis, 11) SCOSTEP Visiting Scholar (SVS) Program, 12) Aircraft observation (dropsonde), 13) International travel support for field and laboratory experiments by students and early career scientists, 14) International technical exchange program, 15) International school support, and 16) International travel support for students (international presentation / institutional stay). Owing to the continuing impact of COVID-19, some international joint research and workshops have been postponed or rescheduled, and research meetings have been held hybridically or online.

The 5th ISEE Symposium “Toward the Future of Space–Earth Environmental Research” was held in a hybrid format at the Sakata and Hirata Hall at Nagoya University from November 15 to 17, 2022, to deepen exchange and integration between space and Earth science within the space–Earth environmental research framework. There were 255 participants, 138 from Japan and 117 from overseas and 85 students, 40 from Japan and 45 from overseas. At this symposium, the 4th ISEE Award was presented to Dr. Satoshi Kasahara of the Graduate School of Science, University of Tokyo. He gave a commemorative lecture titled “One solar cycle with the ERG (ARASE) mission”.

The ISEE community meeting was also held online on November 18, the day after the 5th ISEE Symposium, to improve ISEE joint research and develop new interdisciplinary collaboration. In addition to the usual ISEE joint research activity reports and joint research introductions, several newly initiated fusion studies in the fields of space, Earth, computational science, planetary science, and plasma science were introduced. Additionally, opinions were exchanged on how ISEE should operate as a central hub for space–Earth environmental research. The meeting was attended by 48 and 37 participants from outside and within the institute, respectively, for a total of 85 participants, including seven students. Active discussions and exchanges of opinions occurred across disciplines.

In FY2022, the ISEE Joint-Research Online Integrated System was updated in the cooperation of the Research Organization of Information and Systems. In this successor system, JROIS2-ISEE, the format for submitting applications and reports was changed, and all categories shifted to a completely web-based application format from FY2023.

Through wide-ranging open-call joint research activities, the ISEE aims to contribute to solving issues pertaining to global warming and extreme weather disasters, such as typhoons, torrential rains, and space weather disasters for satellites, communications, positioning, electric power, and aviation systems. We also aim to establish an international joint research center connecting diverse fields, with particular emphasis on fostering young researchers, promoting international joint research, and strengthening the integration of diverse fields of space and Earth science through interdisciplinary joint research.

## List of Accepted Proposals

### ■ ISEE International Joint Research Program

Proposer (Affiliation* Job title*)	Title of the research program	Corresponding ISEE researcher
Rangaiah Kariyappa (Former Professor, Indian Institute of Astrophysics)	Solar X-ray Irradiance, Temperature & Magnetic Field Variabilities of the Spatially Resolved Coronal Features	Satoshi Masuda
Ratnam Venkata Devanaboyina (Professor, KL Deemed to be University, India)	Investigation of Extreme Global Total Electron Content Events using Statistical and Fractal Methods	Yuichi Otsuka
Andrew Oke-Ovie Akala (Associate Professor, University of Lagos, Nigeria)	A study on responses of global equatorial/low-latitude ionosphere to CIR-driven and CME-driven intense geomagnetic storms during solar cycle 24	Yuichi Otsuka
Ravindra Pratap Singh, (Academic Faculty, Physical Research Laboratory, India;)	SSW influence on the MLT dynamics, temperature, and meridional circulation	Satonori Nozawa
Linjie Chen (Associate Researcher/Professor, National Astronomical Observatories, Chinese Academy of Sciences)	Estimation of solar wind speed using the multi-station IPS telescope	Kazumasa Iwai
Ajeet Kumar Maurya (Assistant Professor, Babasaheb Bhimrao Ambedkar University, Lucknow, India)	Understanding vertical atmosphere-ionosphere (AI) coupling through atmospheric gravity waves	Yuichi Otsuka
Prayitno Abadi (Researcher, Other Institution)	Developing a nowcasting capability for the occurrence of post-sunset equatorial plasma bubble in Southeast Asia	Yuichi Otsuka
Wai Leong Teh (Lecturer, Universiti Kebangsaan Malaysia)	Understanding the Role of Magnetic Island in Plasma Acceleration and Energy Conversion during Magnetic Reconnection	Takayuki Umeda
Hermann Opgenoorth (Professor Emeritus, Umeå University, Sweden)	Study of sub-auroral storm time magnetic and convection disturbances and their effects for GIC and GNSS impacts	Nozomu Nishitani
Dedong Wang (Scientist, GFZ German Research Centre for Geosciences)	Analytical Chorus Wave Models Derived from Van Allen Probe and Arase Observations	Yoshizumi Miyoshi
Sudarsanam Tulasiram (Professor, Indian Institute of Geomagnetism)	Geomagnetically Induced Currents at equator due to IP shocks and solar wind discontinuities	Kazuo Shiokawa
Shibaji Chakraborty (Postdoctoral Associate, Virginia Polytechnic Institute and State University, USA)	Influence of Solar Flare-Driven Changes in the Ionospheric Conductance and Electric Fields on HF Radar Observed Doppler Flash	Nozomu Nishitani
Ondrej Santolik (Professor, Institute of Atmospheric Physics, Czech Republic)	Investigation of electromagnetic waves in space plasmas	Yoshizumi Miyoshi
Takuya Hara (Assistant Research Physicist, University of California Berkeley, USA)	Multi-point spacecraft investigations on the solar erupted magnetic flux ropes propagating through the inner heliosphere	Kazumasa Iwai
Viktor Fedun (Professor, The University of Sheffield, UK)	Analysis of solar active regions based on Lagrangian methodology	Kanya Kusano
Matthew Lazzara (Senior Scientist, University of Wisconsin-Madison, USA)	Creation of a new high-quality longterm temperature dataset of East Antarctic meteorological observations	Naoyuki Kurita
Samuel Krucker (Professor, Fachhochschule Nordwestschweiz, Switzerland)	The NoRH/RHESSI flare catalogue: time-dependent analysis	Satoshi Masuda
Brian Welsch (Associate Professor, University of Wisconsin-Green Bay, USA)	Exploring Magnetic Energies to Understand and Predict CME Onset	Kanya Kusano
Sae Aizawa (Postdoc, Institut de Recherche en Astrophysique et Planetologie, France)	Investigation of the solar wind propagation and its characteristics in the inner heliosphere using multispacecraft, ground-based observations and numerical simulations	Yoshizumi Miyoshi
Matthias Foerster (Senior Scientist, GFZ German Research Centre for Geosciences)	Subauroral phenomena observed by SuperDARN and the Swarm satellite constellation	Nozomu Nishitani
Thomas Berger (Research Staff, University of Colorado at Boulder, USA)	Investigation of Solar Polar Magnetic Fields using Hinode/SP and SDO/HMI Data	Kanya Kusano

Proposer (Affiliation* Job title*)	Title of the research program	Corresponding ISEE researcher
Andrzej Rakowski (Associate Professor, Silesian University of Technology, Poland)	Establishment of master dendrochronological calibration curve around 660 BC using annual tree ring samples from Poland	Masayo Minami
Tobias Spiegl (Professor, Freie Universität Berlin, Germany)	Modelling the transport and deposition of $^{14}\text{C}$ produced by extreme solar proton events and $^7\text{Be}$ produced by galactic cosmic rays during the satellite era	Fusa Miyake

\* Proposer's affiliation and job title are as of the proposal submission date.

## ■ ISEE/CICR International Workshop

Proposer (Affiliation* Job title*)	Title of the workshop	Corresponding ISEE researcher
Go Murakami (Assistant Professor, Japan Aerospace Exploration Agency, Japan)	Contribution of the BepiColombo mission to heliospheric system science	Yoshizumi Miyoshi
K. D. Leka, (Senior Research Scientist, NorthWest Research Associates, USA)	What is a Magnetic Flux Rope? Do we know it when we have one?	Kanya Kusano

\* Proposer's affiliation and job title are as of the proposal submission date.

## ■ SCOSTEP Visiting Scholar (SVS) Program

Proposer (Affiliation* Job title*)	Title of the program	Corresponding ISEE researcher
Rahul Rathi (graduate course student, Indian Institute of Technology Roorkee, India)	Determination of local geomagnetic index and its correlation with TEC and airglow intensity	Kazuo Shiokawa
Veera Kumar Maheswaran (graduate-course student, SASTRA Deemed University, India)	Investigation of latitudinal dependence of medium-scale traveling ionospheric disturbances detected from GNSS TEC data over equatorial regions	Yuichi Otsuka
Chukwuma Anoruo (graduate-course student University of Nigeria, Nsukka, Nigeria)	Study of TEC variations during geomagnetic storms	Yuichi Otsuka
Pankaj Kumar Soni (graduate-course student, Indian Institute of Geomagnetism, India)	Investigation of flux enhancement and associated changes in pitch angle distributions of radiation belt particles	Yoshizumi Miyoshi
Nilesh Chauhan (graduate-course student, Indian Institute of Geomagnetism, India)	Study of mesospheric bores from middle and high latitude region	Kazuo Shiokawa
Wellen Rukundo (graduate-course student, Egypt-Japan University of Science and Technology, Egypt)	Detection of equatorial plasma bubbles (EPBs) using a low-cost 630.0 nm all-sky imager	Kazuo Shiokawa
Adithya H. N. (SVS 2021 Recipient) (graduate-course student, Scikraft Education and Engineering Design Pvt. Ltd. India)	Coronal temperature variability from spatially resolved images of the Sun from Hinode/XRT	Satoshi Masuda
Onyinye Gift Nwankwo (graduate-course student, University of Michigan, USA)	Extensive investigation, comparison and validation of the thermospheric wind observations during geomagnetic quiet and disturbed periods using the data surveys from ground-based equipment and results from model calculations	Kazuo Shiokawa

\* Proposer's affiliation and job title are as of the proposal submission date.

### ■ International Technical Exchange Program

Proposer (Affiliation* Job title*)	Title of the program	Corresponding ISEE researcher
Bernhard Kleim (Research Senior Astrophysicist, University of Potsdam, Germany)	Modeling the Source Region of the Extreme Space Weather Event of 1921 May 14–15	Satoshi Masuda
Kevin Krieger (Head Research Engineer, University of Saskatchewan, Canada)	SuperDARN Hokkaido Pair of radars (HOP) system hardware and software development	Nozomu Nishitani
Manabu Shimoyama (Senior Scientist, Swedish Institute of Space Physics, Sweden,)	Joint technology development of ultra-low energy neutral atmospheric analyzer for future Earth and planetary explorers	Masafumi Hirahara
Masayo Minami (Professor, Nagoya University, Japan)	Technical exchange on accelerator mass spectrometry (AMS) for accurate and precise $^{14}\text{C}$ measurement	Masayo Minami

\* Proposer's affiliation and job title are as of the proposal submission date.

### ■ ISEE International School Support

Proposer (Affiliation* Job title*)	Title of the program	Corresponding ISEE researcher
Jyrki Manninen (Deputy Director, University of Oulu, Finland)	VERSIM Workshop	Claudia Maria Martinez-Calderon
Hiroyuki Kitagawa (Professor, Nagoya University, Japan)	Short course on AMS radiocarbon dating	Masayo Minami

\* Proposer's affiliation and job title are as of the proposal submission date.

## Lists of Collaboration Resources

### ■ Instruments

Name	Contact Person
Multi-Directional Cosmic Ray Muon Telescope (Nagoya)	Yutaka Matsubara
Multi-Station IPS Solar Wind Observation System (Toyokawa, Fuji, and Kiso)	Munetoshi Tokumaru
ELF/VLF Network	Kazuo Shiokawa
ISEE Magnetometer Network	Kazuo Shiokawa
ISEE Riometer Network	Kazuo Shiokawa
Optical Mesosphere Thermosphere Imagers	Kazuo Shiokawa
Sodium LIDAR (Tromsø)	Satonori Nozawa
MF Radar (Tromsø)	Satonori Nozawa
Five-Wavelength Photometer (Tromsø)	Satonori Nozawa
Meteor Radar (Alta)	Satonori Nozawa
SuperDARN Hokkaido Pair of (HOP) Radars (Rikubetsu)	Nozomu Nishitani
Upper Air Sounding Systems (two sets)	Kazuhisa Tsuboki
Polarimetric Radar Systems (two sets)	Kazuhisa Tsuboki
Ka-Band Polarimetric Radar	Kazuhisa Tsuboki
Hydrometeor Video Sonde (HYVIS) System	Kazuhisa Tsuboki
Fourier Transform Infrared (FTIR) Spectrometer for Atmospheric Composition Measurement (Rikubetsu)	Tomoo. Nagahama
Sea Spray Aerosol Optical Particle Counter	Hidenori Aiki
Low-Background Beta-Ray Counter	Naoyuki Kurita
Water Isotope Analyzer (Picarro L2130-i)	Naoyuki Kurita

### ■ Software/Databases

Name	Contact Person
Hinode Science Center, Nagoya University	Kanya Kusano
ERG Science Center	Yoshizumi Miyoshi
QL Plot Archive of Satellite Data for Integrated Studies	Yoshizumi Miyoshi
MHD Simulation on the Magnetospheric Environment	Takayuki Umeda
Numerical Simulation Codes for Plasma Kinetics	Takayuki Umeda
Cosmic Ray Intensity Database	Yutaka Matsubara
Interplanetary Scintillation Data	Munetoshi Tokumaru
Solar Wind Speed Data	Munetoshi Tokumaru
Remei Satellite Observation Database	Masafumi Hirahara
Coordinated Magnetic Data Along 210° Magnetic Meridian (Moshiri, Rikubetsu, Kagoshima, and Overseas MM Stations)	Kazuo Shiokawa
Database of the Optical Mesosphere Thermosphere Imagers	Kazuo Shiokawa
ELF/VLF Wave Data	Kazuo Shiokawa

Name	Contact Person
ISEE Riometer Network Database	Kazuo Shiokawa
All-Sky Auroral Data (Canada, Alaska, and Siberia)	Kazuo Shiokawa, Yoshizumi Miyoshi
VHF Radar/GPS Scintillation (Indonesia)	Yuichi Otsuka
EISCAT Database	Satonori Nozawa, Shin-ichiro Oyama
SuperDARN Hokkaido Pair of (HOP) Radars Database	Nozomu Nishitani
Cloud Resolving Storm Simulator (CReSS)	Kazuhiisa Tsuboki
Atmospheric Composition Data by FTIR Measurements (Moshiri and Rikubetsu)	Tomoo Nagahama
NO <sub>2</sub> and O <sub>3</sub> Data by UV/Visible Spectrometer Measurements (Moshiri and Rikubetsu)	Tomoo Nagahama
Satellite Data Simulator Unit (SDSU)	Hirohiko Masunaga
Energy Flux Diagnosis Code for Atmospheric and Oceanic Waves	Hidenori Aiki

## ■ Facilities

Name	Contact Person
CIDAS System	Satoshi Masuda, Takayuki Umeda, Yoshizumi Miyoshi
Ion/Electron Beamline and Calibration Facility	Masafumi Hirahara
Clean Room Facility for Instrument Development	Masafumi Hirahara
CHN Analyzer, Isotope Ratio Mass Spectrometer	Yoshihisa Mino
Tandem Accelerator Mass Spectrometry	Hiroyuki Kitagawa, Masayo Minami
Electron Probe Microanalyzer (EPMA)	Takenori Kato
X-Ray Fluorescence Spectrometer (XRF)	Takenori Kato
X-Ray Diffractometer (XRD)	Takenori Kato
Facilities at Moshiri Observatory	Akira Mizuno
Facilities at Rikubetsu Observatory	Akira Mizuno
Facilities at Kiso Station	Munetoshi Tokumaru
Facilities at Fuji Observatory	Munetoshi Tokumaru
Facilities at Kagoshima Observatory	Kazuo Shiokawa

## 6. Governance

As of March 31, 2023

### Advisory Board

<b>Masaki Fujimoto</b>	Institute of Space and Astronautical Science, Japan Aerospace Exploration Agency
<b>Masahiro Hoshino</b>	Graduate School of Science, The University of Tokyo
<b>Hironobu Hyodo</b>	Research Institute of Frontier Science and Technology, Okayama University of Science
<b>Mamoru Ishii</b>	Radio Propagation Research Center, Radio Research Institute, National Institute of Information and Communications Technology
<b>Takaaki Kajita</b>	Institute for Cosmic Ray Research, The University of Tokyo
<b>Takeshi Kawano</b>	Japan Agency for Marine-Earth Science and Technology
<b>Takuji Nakamura</b>	National Institute of Polar Research, Research Organization of Information and Systems
<b>Nobuko Saigusa</b>	Earth System Division, National Institute for Environmental Studies
<b>Yukari N. Takayabu</b>	Atmosphere and Ocean Research Institute, The University of Tokyo
<b>Makoto Taniguchi</b>	Research Institute for Humanity and Nature, National Institutes for the Humanities
<b>Junichi Watanabe</b>	National Astronomical Observatory of Japan, National Institutes of Natural Sciences
<b>Mamoru Yamamoto</b>	Research Institute for Sustainable Humanosphere, Kyoto University
<b>Takaaki Yokoyama</b>	Astronomical Observatory, Graduate School of Science, Kyoto University
<b>Hisayoshi Yurimoto</b>	Faculty of Science, Hokkaido University
<b>Tatsuya Suzuki</b>	Graduate School of Engineering, Nagoya University
<b>Urumu Tsunogai</b>	Graduate School of Environmental Studies, Nagoya University
<b>Tomohiko Watanabe</b>	Graduate School of Science, Nagoya University
<b>Masafumi Hirahara</b>	Institute for Space–Earth Environmental Research, Nagoya University
<b>Tetsuya Hiyama</b>	Institute for Space–Earth Environmental Research, Nagoya University
<b>Yoshitaka Itow</b>	Institute for Space–Earth Environmental Research, Nagoya University
<b>Hiroyuki Kitagawa</b>	Institute for Space–Earth Environmental Research, Nagoya University
<b>Yoshizumi Miyoshi</b>	Institute for Space–Earth Environmental Research, Nagoya University
<b>Akira Mizuno</b>	Institute for Space–Earth Environmental Research, Nagoya University
<b>Kazuo Shiokawa</b>	Institute for Space–Earth Environmental Research, Nagoya University
<b>Nobuhiro Takahashi</b>	Institute for Space–Earth Environmental Research, Nagoya University
<b>Munetoshi Tokumaru</b>	Institute for Space–Earth Environmental Research, Nagoya University



---

**Collaborative Research Committee**

---

<b>Yoichiro Hanaoka</b>	National Astronomical Observatory of Japan, National Institutes of Natural Sciences
<b>Atsushi Higuchi</b>	Center for Environmental Remote Sensing, Chiba University
<b>Akira Kadokura</b>	Polar Environment Data Science Center, Joint Support-Center for Data Science Research, Research Organization of Information and Systems
<b>Yoshiya Kasahara</b>	Emerging Media Initiative, Kanazawa University
<b>Chihiro Kato</b>	Faculty of Science, Shinshu University
<b>Kazuyuki Kita</b>	College of Science, Ibaraki University
<b>Yoko S. Kokubu</b>	Tono Geoscience Center, Japan Atomic Energy Agency
<b>Yuki Kubo</b>	Radio Research Institute, National Institute of Information and Communications Technology
<b>Takashi Minoshima</b>	Research Institute for Value-Added-Information Generation, Japan Agency for Marine-Earth Science and Technology
<b>Akihiko Morimoto</b>	Center for Marine Environmental Studies, Ehime University
<b>Takeshi Sakanoi</b>	Graduate School of Science, Tohoku University
<b>Kimikazu Sasa</b>	Physics, Faculty of Pure and Applied Sciences, University of Tsukuba
<b>Kanako Seki</b>	Graduate School of Science, The University of Tokyo
<b>Iku Shinohara</b>	Institute of Space and Astronautical Science, Japan Aerospace Exploration Agency
<b>Hiroyuki Yamada</b>	Faculty of Science, University of the Ryukyus
<b>Hidenori Aiki</b>	Institute for Space–Earth Environmental Research, Nagoya University
<b>Takenori Kato</b>	Institute for Space–Earth Environmental Research, Nagoya University
<b>Kanya Kusano</b>	Institute for Space–Earth Environmental Research, Nagoya University
<b>Satoshi Masuda</b>	Institute for Space–Earth Environmental Research, Nagoya University
<b>Yutaka Matsubara</b>	Institute for Space–Earth Environmental Research, Nagoya University
<b>Masayo Minami</b>	Institute for Space–Earth Environmental Research, Nagoya University
<b>Tomoo Nagahama</b>	Institute for Space–Earth Environmental Research, Nagoya University
<b>Masahito Nosé</b>	Institute for Space–Earth Environmental Research, Nagoya University
<b>Yuichi Otsuka</b>	Institute for Space–Earth Environmental Research, Nagoya University
<b>Taro Shinoda</b>	Institute for Space–Earth Environmental Research, Nagoya University
<b>Kazuo Shiokawa</b>	Institute for Space–Earth Environmental Research, Nagoya University
<b>Nobuhiro Takahashi</b>	Institute for Space–Earth Environmental Research, Nagoya University
<b>Munetoshi Tokumaru</b>	Institute for Space–Earth Environmental Research, Nagoya University
<b>Takayuki Umeda</b>	Institute for Space–Earth Environmental Research, Nagoya University
<b>Tetsuya Hiyama</b> *observer	Institute for Space–Earth Environmental Research, Nagoya University

---

## Joint Research Technical Committee

### Integrated Studies Technical Committee

---

<b>Ayumi Asai</b>	Graduate School of Science, Kyoto University
<b>Hirohisa Hara</b>	National Astronomical Observatory of Japan, National Institutes of Natural Sciences
<b>Yuto Katoh</b>	Graduate School of Science, Tohoku University
<b>Kanako Seki</b>	Graduate School of Science, The University of Tokyo
<b>Iku Shinohara</b>	Institute of Space and Astronautical Science, Japan Aerospace Exploration Agency
<b>Akimasa Yoshikawa</b>	Graduate School of Sciences, Kyushu University
<b>Kanya Kusano</b>	Institute for Space–Earth Environmental Research, Nagoya University
<b>Satoshi Masuda</b>	Institute for Space–Earth Environmental Research, Nagoya University
<b>Yoshizumi Miyoshi</b>	Institute for Space–Earth Environmental Research, Nagoya University
<b>Takayuki Umeda</b>	Institute for Space–Earth Environmental Research, Nagoya University

### Heliospheric and Cosmic-Ray Research Technical Committee

---

<b>Yoichiro Hanaoka</b>	National Astronomical Observatory of Japan, National Institutes of Natural Sciences
<b>Chihiro Kato</b>	Faculty of Science, Shinshu University
<b>Tatsumi Koi</b>	College of Engineering, Chubu University
<b>Shuichi Matsukiyo</b>	Interdisciplinary Graduate School of Engineering Sciences, Kyushu University
<b>Tomoko Nakagawa</b>	Faculty of Engineering, Tohoku Institute of Technology
<b>Yasuhiro Nariyuki</b>	Faculty of Human Development, University of Toyama
<b>Yoshitaka Itow</b>	Institute for Space–Earth Environmental Research, Nagoya University
<b>Kazumasa Iwai</b>	Institute for Space–Earth Environmental Research, Nagoya University
<b>Yutaka Matsubara</b>	Institute for Space–Earth Environmental Research, Nagoya University
<b>Munetoshi Tokumaru</b>	Institute for Space–Earth Environmental Research, Nagoya University

### Ionospheric and Magnetospheric Research Technical Committee

---

<b>Yoshiya Kasahara</b>	Emerging Media Initiative, Kanazawa University
<b>Hiroyuki Nakata</b>	Graduate School of Engineering, Chiba University
<b>Shin Suzuki</b>	Faculty of Regional Policy, Aichi University
<b>Fuminori Tsuchiya</b>	Graduate School of Science, Tohoku University
<b>Masahito Nosé</b>	Institute for Space–Earth Environmental Research, Nagoya University
<b>Satonori Nozawa</b>	Institute for Space–Earth Environmental Research, Nagoya University
<b>Yuichi Otsuka</b>	Institute for Space–Earth Environmental Research, Nagoya University

---

**Meteorological, Atmospheric and Land-Ocean Ecosystem Research Technical Committee**

---

<b>Daisuke Goto</b>	Center for Regional Environmental Research, National Institute for Environmental Studies
<b>Atsushi Higuchi</b>	Center for Environmental Remote Sensing, Chiba University
<b>Masafumi Hirose</b>	Faculty of Science and Technology, Meijo University
<b>Akihiko Morimoto</b>	Center for Marine Environmental Studies, Ehime University
<b>Kenshi Takahashi</b>	Research Institute for Sustainable Humanosphere, Kyoto University
<b>Hatsuki Fujinami</b>	Institute for Space–Earth Environmental Research, Nagoya University
<b>Tetsuya Hiyama</b>	Institute for Space–Earth Environmental Research, Nagoya University
<b>Hirohiko Masunaga</b>	Institute for Space–Earth Environmental Research, Nagoya University
<b>Akira Mizuno</b>	Institute for Space–Earth Environmental Research, Nagoya University
<b>Tomoo Nagahama</b>	Institute for Space–Earth Environmental Research, Nagoya University

---

**Chronological Research Technical Committee**

---

<b>Seiji Kadowaki</b>	Nagoya University Museum
<b>Yoko S. Kokubu</b>	Tono Geoscience Center, Japan Atomic Energy Agency
<b>Katsuyoshi Michibayashi</b>	Graduate School of Environmental Studies, Nagoya University
<b>Kimikazu Sasa</b>	Physics, Faculty of Pure and Applied Sciences, University of Tsukuba
<b>Motohiro Tsuboi</b>	School of Biological and Environmental Sciences, Kwansei Gakuin University
<b>Hiromi Yamazawa</b>	Graduate School of Engineering, Nagoya University
<b>Takenori Kato</b>	Institute for Space–Earth Environmental Research, Nagoya University
<b>Hiroyuki Kitagawa</b>	Institute for Space–Earth Environmental Research, Nagoya University
<b>Masayo Minami</b>	Institute for Space–Earth Environmental Research, Nagoya University
<b>Fusa Miyake</b>	Institute for Space–Earth Environmental Research, Nagoya University

---

**Airplane Usage Technical Committee**

---

<b>Kazuyuki Kita</b>	College of Science, Ibaraki University
<b>Makoto Koike</b>	Graduate School of Science, The University of Tokyo
<b>Akihiko Kondo</b>	Center for Environmental Remote Sensing, Chiba University
<b>Seiho Uratsuka</b>	Radio Research Institute, National Institute of Information and Communications Technology
<b>Hiroyuki Yamada</b>	Faculty of Science, University of the Ryukyus
<b>Taro Shinoda</b>	Institute for Space–Earth Environmental Research, Nagoya University
<b>Hiroyasu Tajima</b>	Institute for Space–Earth Environmental Research, Nagoya University
<b>Nobuhiro Takahashi</b>	Institute for Space–Earth Environmental Research, Nagoya University

---

## Steering Committee of the Center for International Collaborative Research

---

<b>Yoichiro Hanaoka</b>	National Astronomical Observatory of Japan, National Institutes of Natural Sciences
<b>Akihiko Morimoto</b>	Center for Marine Environmental Studies, Ehime University
<b>Akinori Saito</b>	Graduate School of Science, Kyoto University
<b>Simon Wallis</b>	Graduate School of Science, The University of Tokyo
<b>Joji Isizaka</b>	Institute for Space–Earth Environmental Research, Nagoya University
<b>Nozomu Nishitani</b>	Institute for Space–Earth Environmental Research, Nagoya University
<b>Kazuo Shiokawa</b>	Institute for Space–Earth Environmental Research, Nagoya University

---

## Steering Committee of the Center for Integrated Data Science

---

<b>Hiroshi Hidaka</b>	Graduate School of Environmental Studies, Nagoya University
<b>Masahiro Hoshino</b>	Graduate School of Science, The University of Tokyo
<b>Ichiro Ide</b>	Graduate School of Informatics, Nagoya University
<b>Yoshifumi Saito</b>	Institute of Space and Astronautical Science, Japan Aerospace Exploration Agency
<b>Shin-ichiro Shima</b>	Graduate School of Information Science, University of Hyogo
<b>Junichi Watanabe</b>	National Astronomical Observatory of Japan, National Institutes of Natural Sciences
<b>Akimasa Yoshikawa</b>	Faculty of Science, Kyushu University
<b>Takenori Kato</b>	Institute for Space–Earth Environmental Research, Nagoya University
<b>Kanya Kusano</b>	Institute for Space–Earth Environmental Research, Nagoya University
<b>Yoshizumi Miyoshi</b>	Institute for Space–Earth Environmental Research, Nagoya University
<b>Kazuhisa Tsuboki</b>	Institute for Space–Earth Environmental Research, Nagoya University
<b>Takayuki Umeda</b>	Institute for Space–Earth Environmental Research, Nagoya University

---

## Steering Committee of the Center for Orbital and Suborbital Research

---

<b>Kazuyuki Kita</b>	College of Science, Ibaraki University
<b>Masato Nakamura</b>	Institute of Space and Astronautical Science, Japan Aerospace Exploration Agency
<b>Riko Oki</b>	Earth Observation Research Center, Space Technology Directorate I, Japan Aerospace Exploration Agency
<b>Hiroyuki Yamada</b>	Faculty of Science, University of the Ryukyus
<b>Masafumi Hirahara</b>	Institute for Space–Earth Environmental Research, Nagoya University
<b>Hiroyasu Tajima</b>	Institute for Space–Earth Environmental Research, Nagoya University
<b>Nobuhiro Takahashi</b>	Institute for Space–Earth Environmental Research, Nagoya University

---

**Steering Committee of the Office for the Development of Interdisciplinary Research Strategy**

---

<b>Junko Hashiba</b>	Nagoya University Library
<b>Ichiro Ide</b>	Graduate School of Informatics, Nagoya University
<b>Mamoru Ishii</b>	Radio Propagation Research Center, Radio Research Institute, National Institute of Information and Communications Technology
<b>Seiji Kadowaki</b>	Nagoya University Museum
<b>Jiro Kasahara</b>	Institute of Materials and Systems for Sustainability, Nagoya University
<b>Akihiko Morimoto</b>	Center for Marine Environmental Studies, Ehime University
<b>Noriyasu Ohno</b>	Graduate School of Engineering, Nagoya University
<b>Kengo Sudo</b>	Graduate School of Environmental Studies, Nagoya University
<b>Sei-ichiro Watanabe</b>	Graduate School of Environmental Studies, Nagoya University
<b>Tomohiko Watanabe</b>	Graduate School of Science, Nagoya University
<b>Tetsuya Hiyama</b>	Institute for Space–Earth Environmental Research, Nagoya University
<b>Kazumasa Iwai</b>	Institute for Space–Earth Environmental Research, Nagoya University
<b>Hiroyuki Kitagawa</b>	Institute for Space–Earth Environmental Research, Nagoya University
<b>Kanya Kusano</b>	Institute for Space–Earth Environmental Research, Nagoya University
<b>Claudia Martinez-Calderon</b>	Institute for Space–Earth Environmental Research, Nagoya University
<b>Yoshizumi Miyoshi</b>	Institute for Space–Earth Environmental Research, Nagoya University
<b>Kazuo Shiokawa</b>	Institute for Space–Earth Environmental Research, Nagoya University
<b>Hiroyasu Tajima</b>	Institute for Space–Earth Environmental Research, Nagoya University
<b>Nobuhiro Takahashi</b>	Institute for Space–Earth Environmental Research, Nagoya University

## 7. Finance

### External Funding and Industry–Academia–Government Collaborations

Researches of ISEE members as principal investigator were supported by the following external funds.

Kakenhi category	Number of subjects	Total amount (JPY)
Grant-in-Aid for Scientific Research on Innovative Areas	1	12,610,000
Grant-in-Aid for Scientific Research (S)	3	115,050,000
Grant-in-Aid for Scientific Research (A)	8	69,030,000
Grant-in-Aid for Scientific Research (B)	10	62,400,000
Grant-in-Aid for Scientific Research (C)	4	7,639,243
Grant-in-Aid for Challenging Research (Exploratory)	7	22,419,521
Grant-in-Aid for Early-Career Scientists	7	13,256,374
Grant-in-Aid for Research Activity Start-up	2	3,383,317
Fund for the Promotion of Joint International Research (Fostering Joint International Research (B))	3	17,236,240
Grant-in-Aid for JSPS Fellows	5	5,970,000
Total	50	328,994,695

- Fifty research subjects listed in the table were supported by the JSPS Kakenhi.
- Twenty-seven research subjects received total 178,873,632 JPY from governmental funds except KAKENHI, and from other universities and companies. Twelve of them were collaborative researches between ISEE and companies, or national institutes.
- Thirteen research subjects received total 19,236,220 JPY of donation.

## Libraries

### ■ Library, Solar-Terrestrial Sciences (ISEE Library #1)

#### Books

Japanese	3,079
Foreign	11,141

#### Journals

Japanese	47
Foreign	207

### ■ Library, Hydrospheric-Atmospheric Sciences (ISEE Library #2)

#### Books

Japanese	4,565
Foreign	8,926

#### Journals

Japanese	282
Foreign	257

## Properties

	Site (m <sup>2</sup> )	Buildings (m <sup>2</sup> )	Location
Higashiyama Campus (Main campus of Nagoya University)	-	8,442	Aichi
Toyokawa Campus	94,212	1,461	Aichi
Moshiri Observatory	110,534	325	Hokkaido
Rikubetsu Observatory	24,580	167	Hokkaido
Kagoshima Observatory	13,449	287	Kagoshima
Fuji Observatory	19,926	174	Yamanashi
Kiso Station	6,240	66	Nagano
Total	268,941	10,922	