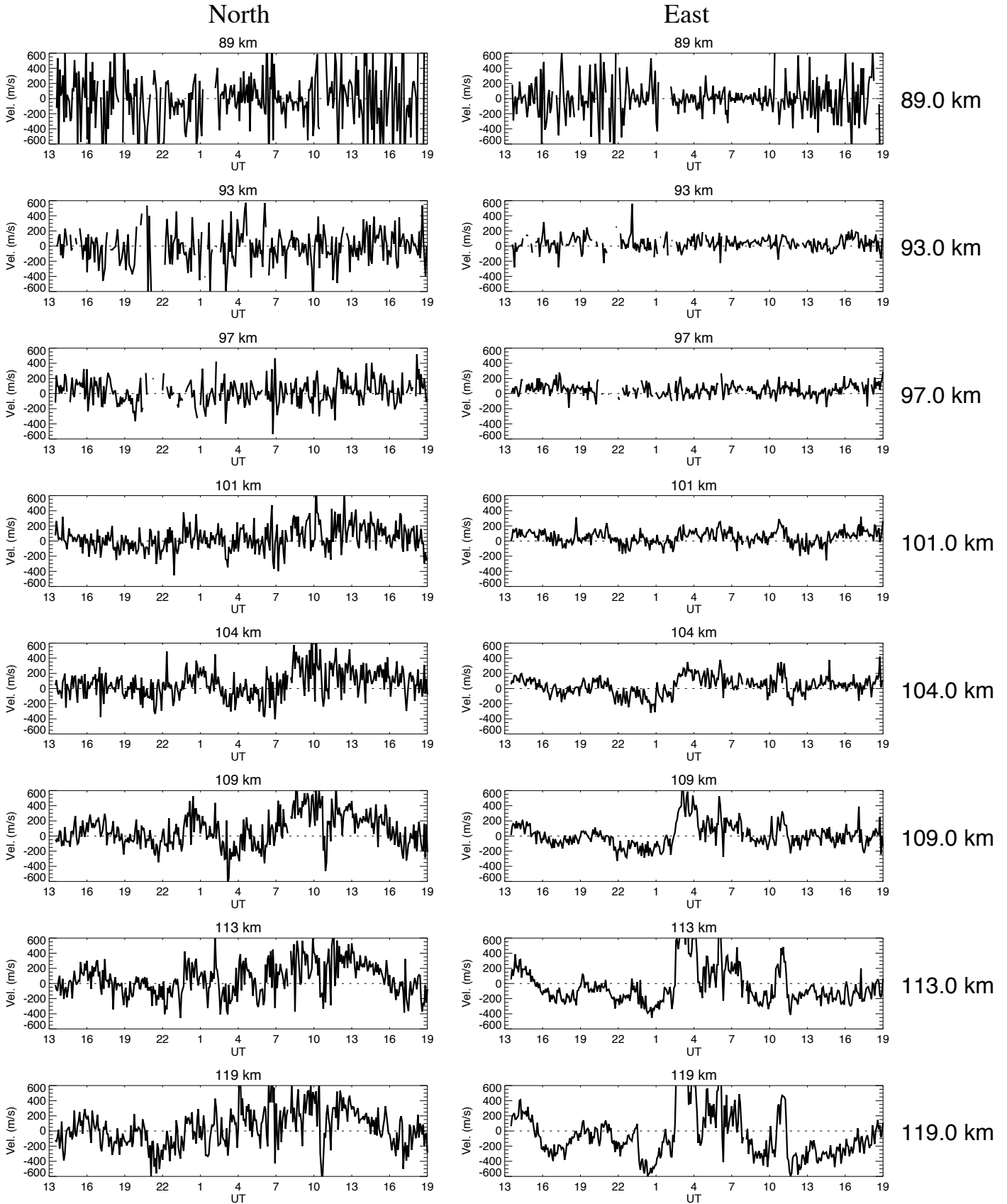


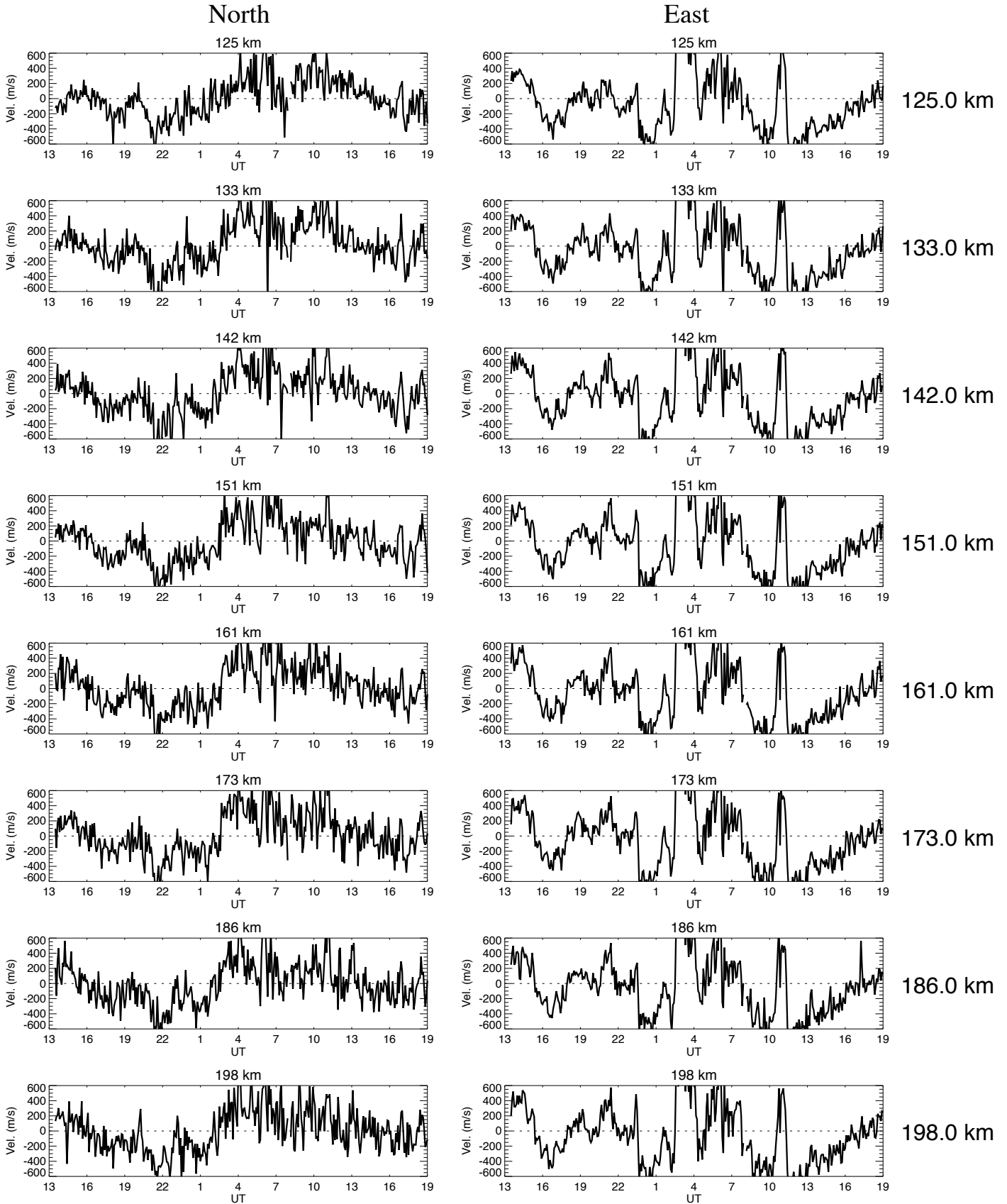
Ion velocities obtained by CP-2 ESR starting on June 21, 2007



No of iteration is 100.
Ti/Te is const. up to 95 km
vmono070621esr.dat

plot_vmono_gup.pro
5 min average done
Mon Sep 13 17:07:56 2010

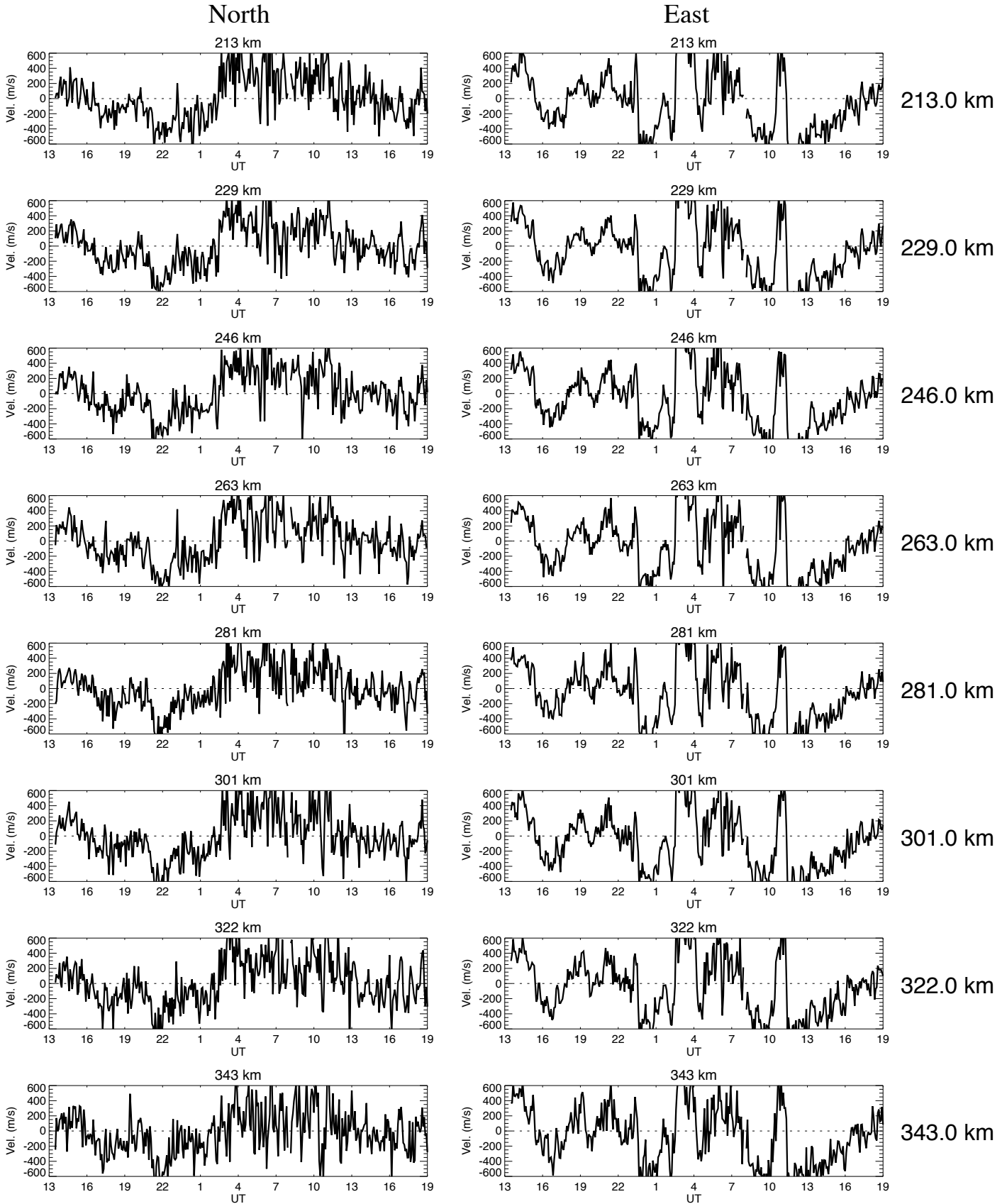
Ion velocities obtained by CP-2 ESR starting on June 21, 2007



No of iteration is 100.
Ti/Te is const. up to 95 km
vmono070621esr.dat

plot_vmono_gup.pro
5 min average done
Mon Sep 13 17:07:56 2010

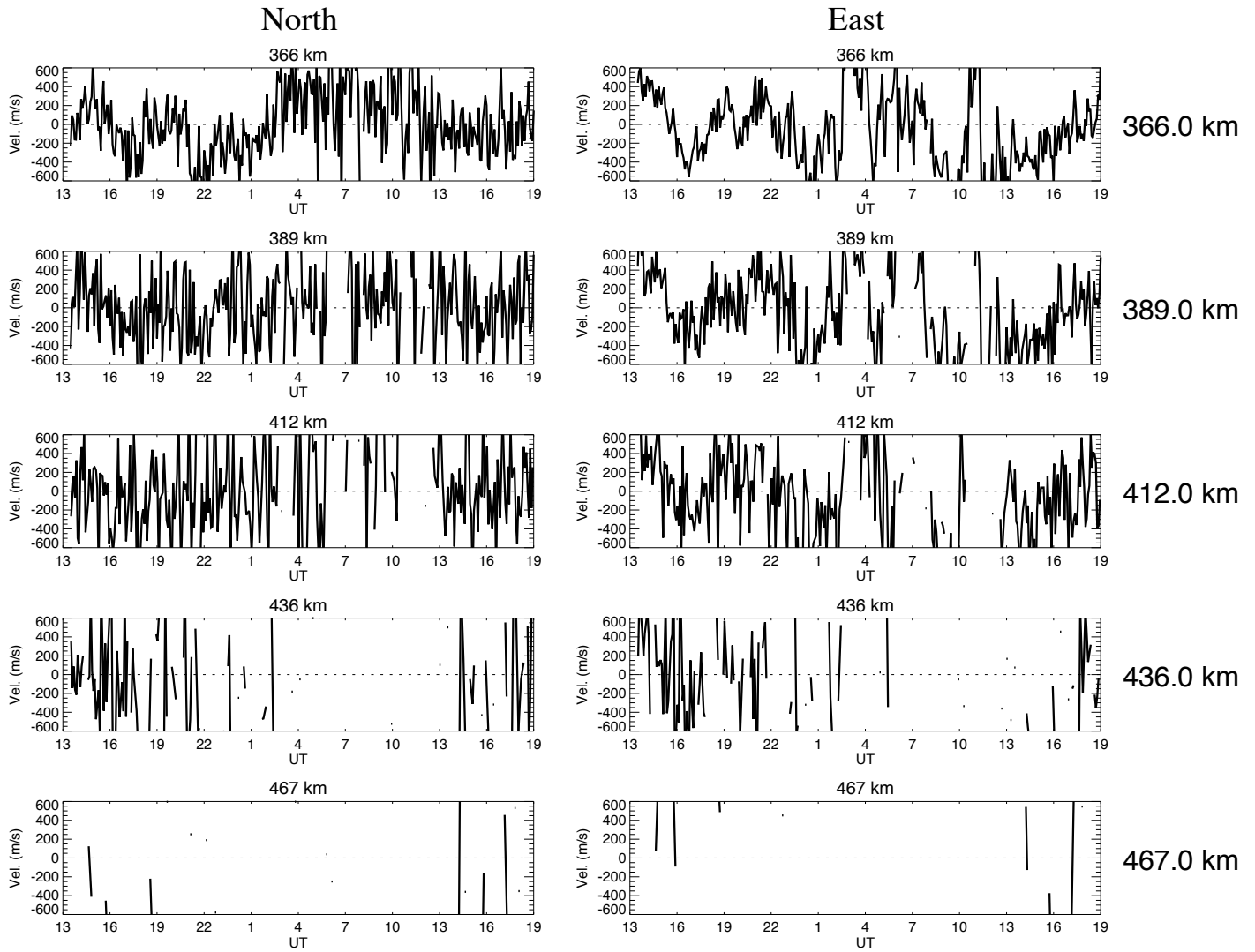
Ion velocities obtained by CP-2 ESR starting on June 21, 2007



No of iteration is 100.
Ti/Te is const. up to 95 km
vmono070621esr.dat

plot_vmono_gup.pro
5 min average done
Mon Sep 13 17:07:57 2010

Ion velocities obtained by CP-2 ESR starting on June 21, 2007



No of iteration is 100.
Ti/Te is const. up to 95 km
vmono070621esr.dat

plot_vmono_gup.pro
5 min average done
Mon Sep 13 17:07:57 2010