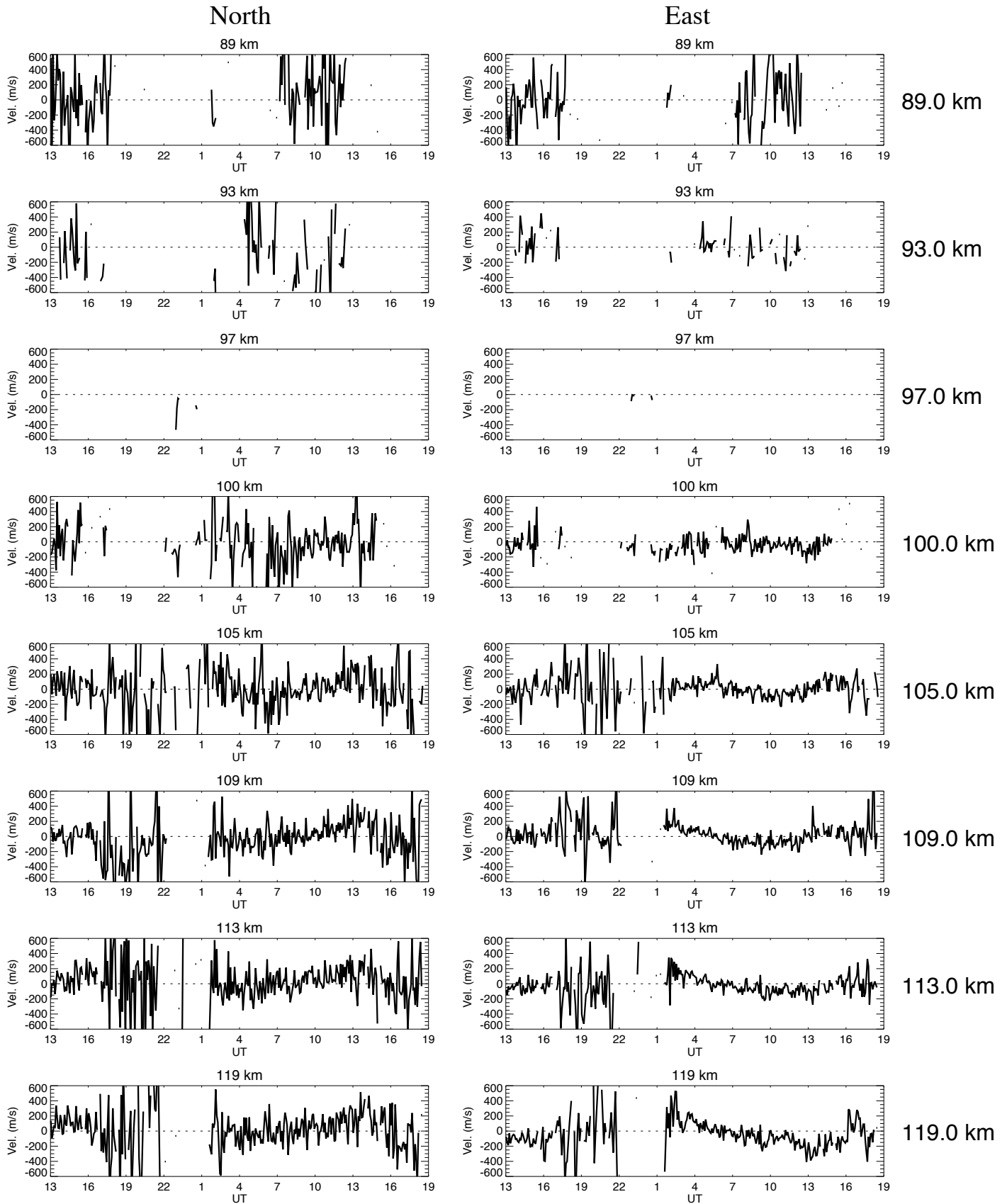


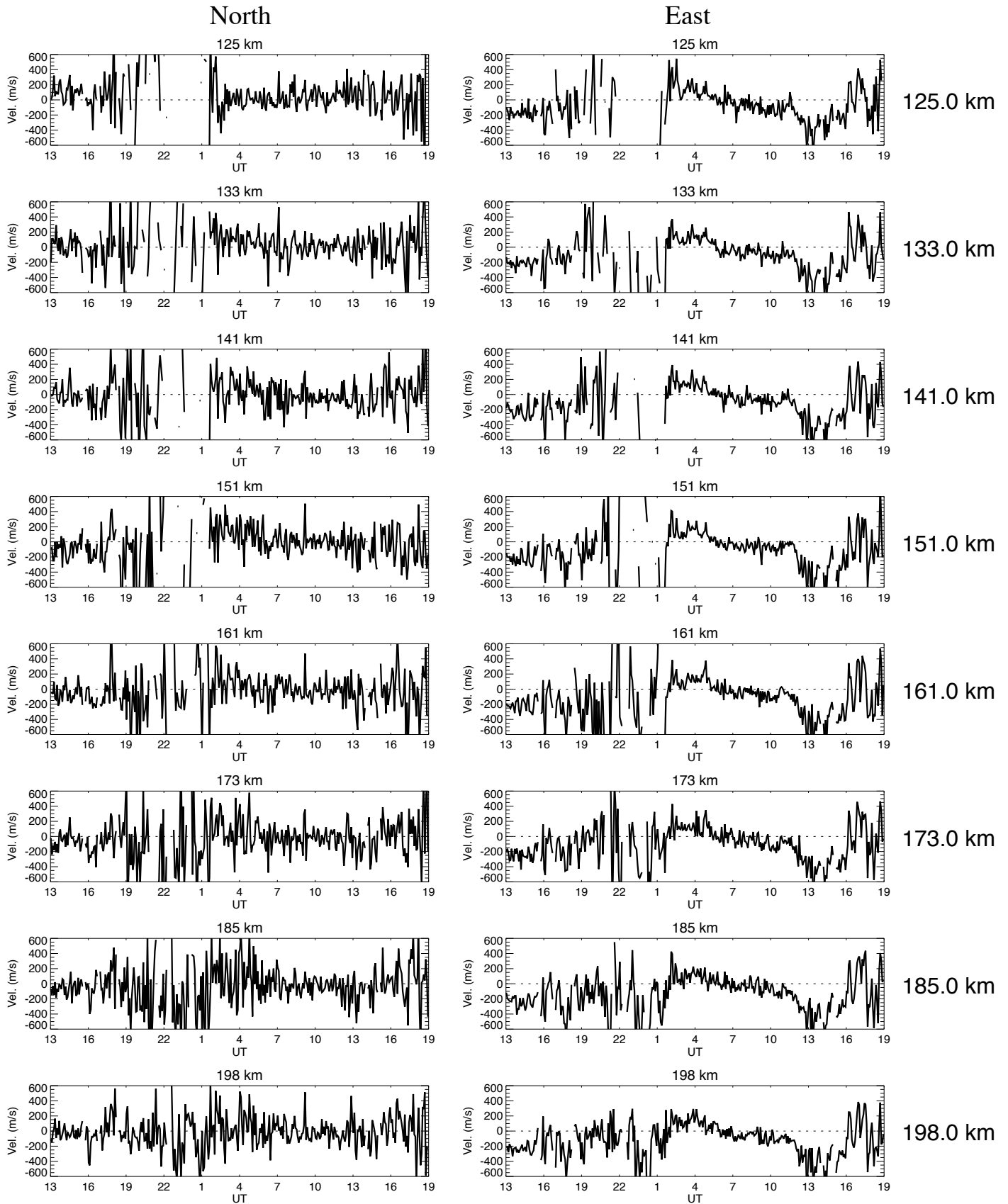
Ion velocities obtained by CP-2 ESR starting on September 13, 2007



No of iteration is 100.
Ti/Te is const. up to 95 km
vmono070913esr.dat

plot_vmono_gup.pro
5 min average done
Tue Sep 14 11:04:41 2010

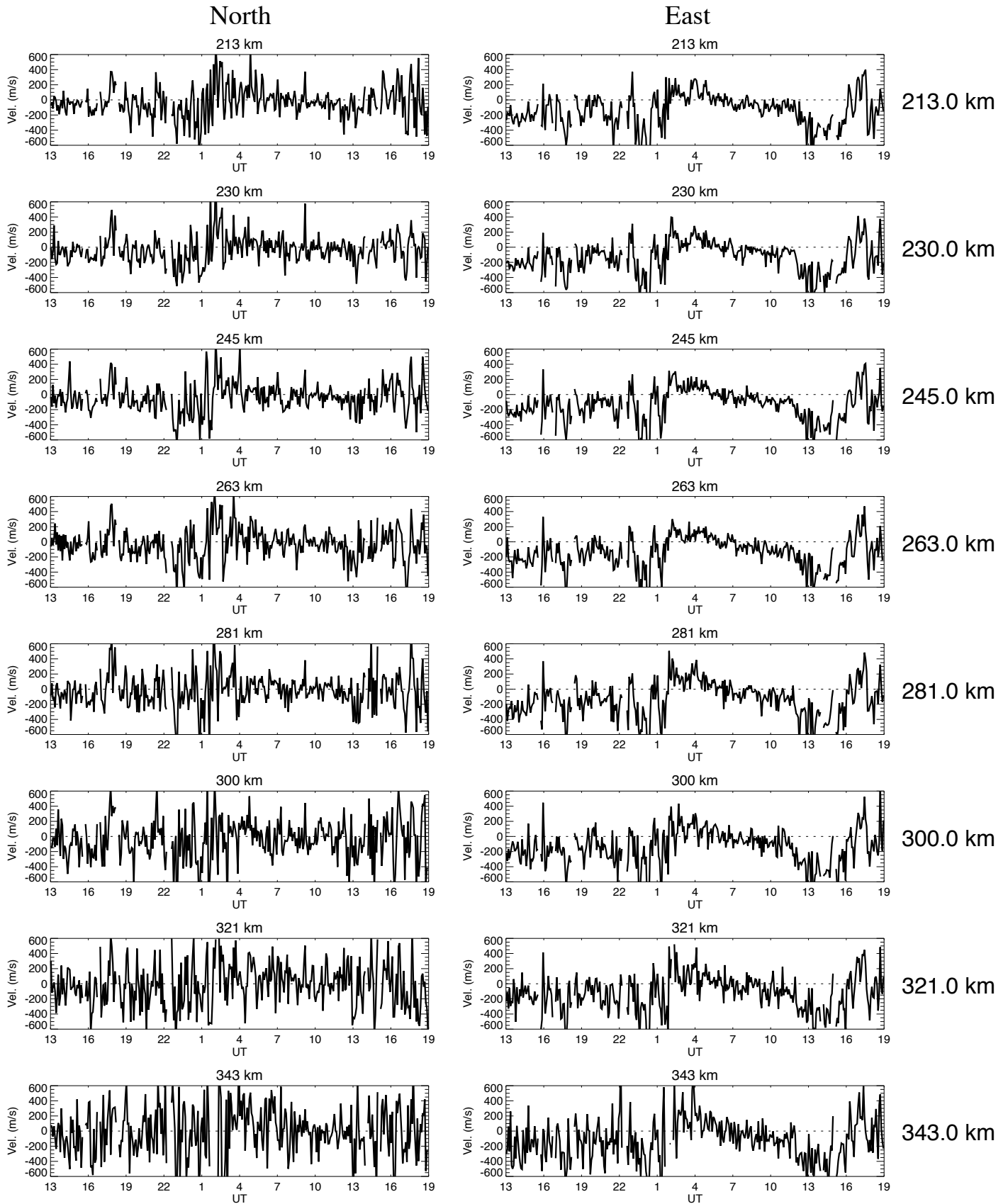
Ion velocities obtained by CP-2 ESR starting on September 13, 2007



No of iteration is 100.
Ti/Te is const. up to 95 km
vmono070913esr.dat

plot_vmono_gup.pro
5 min average done
Tue Sep 14 11:04:41 2010

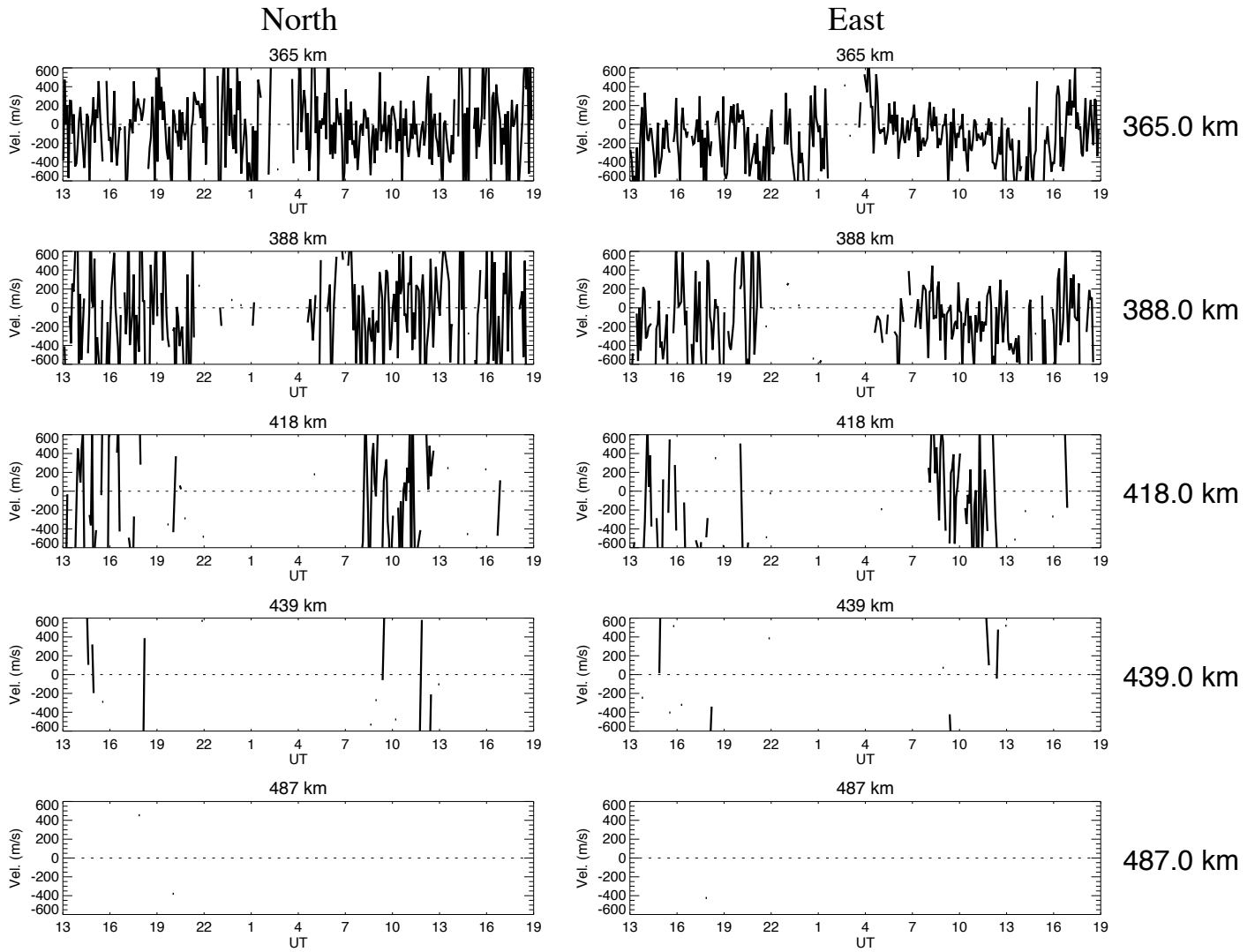
Ion velocities obtained by CP-2 ESR starting on September 13, 2007



No of iteration is 100.
Ti/Te is const. up to 95 km
vmono070913esr.dat

plot_vmono_gup.pro
5 min average done
Tue Sep 14 11:04:41 2010

Ion velocities obtained by CP-2 ESR starting on September 13, 2007



No of iteration is 100.
Ti/Te is const. up to 95 km
vmono070913esr.dat

plot_vmono_gup.pro
5 min average done
Tue Sep 14 11:04:42 2010