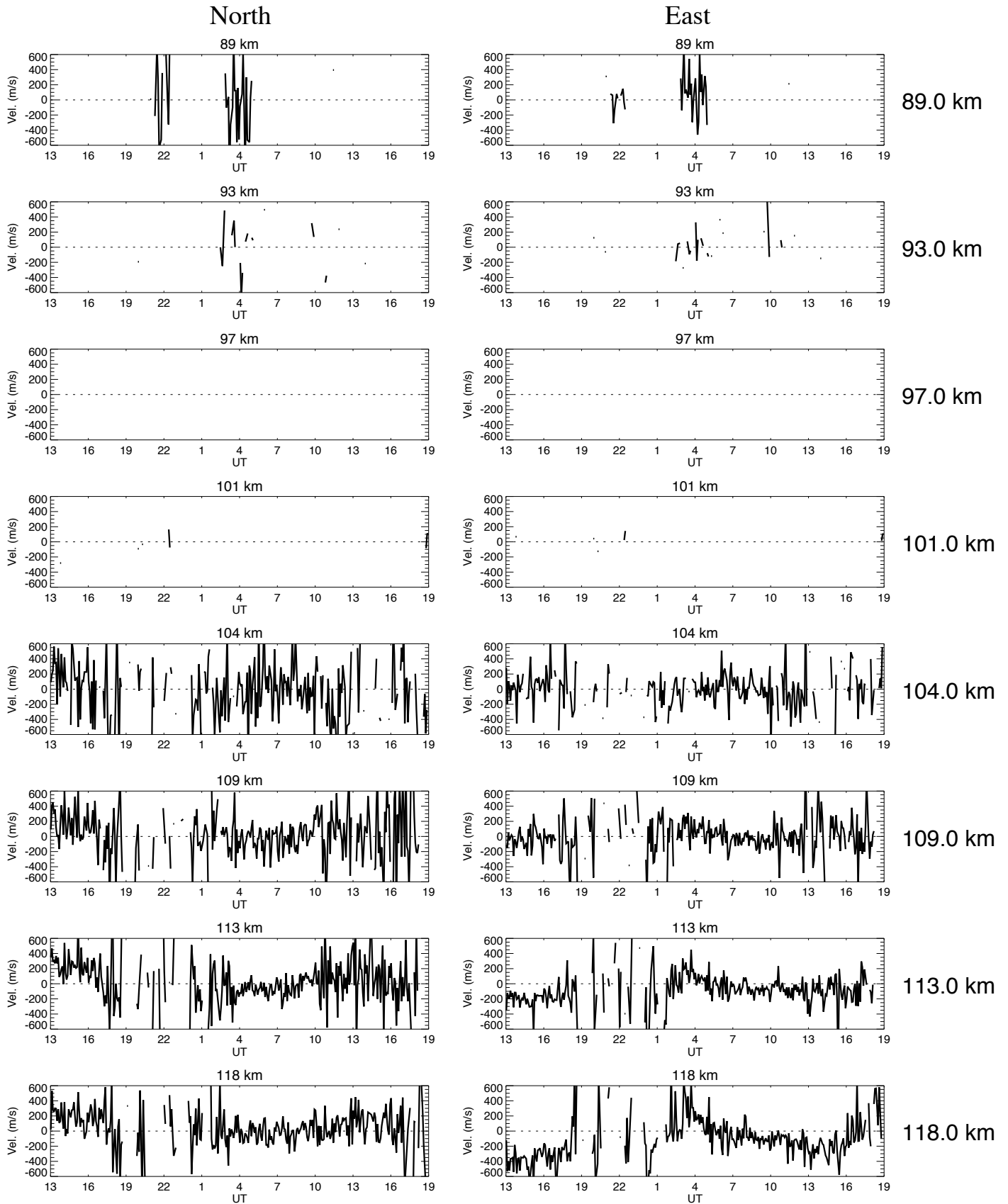


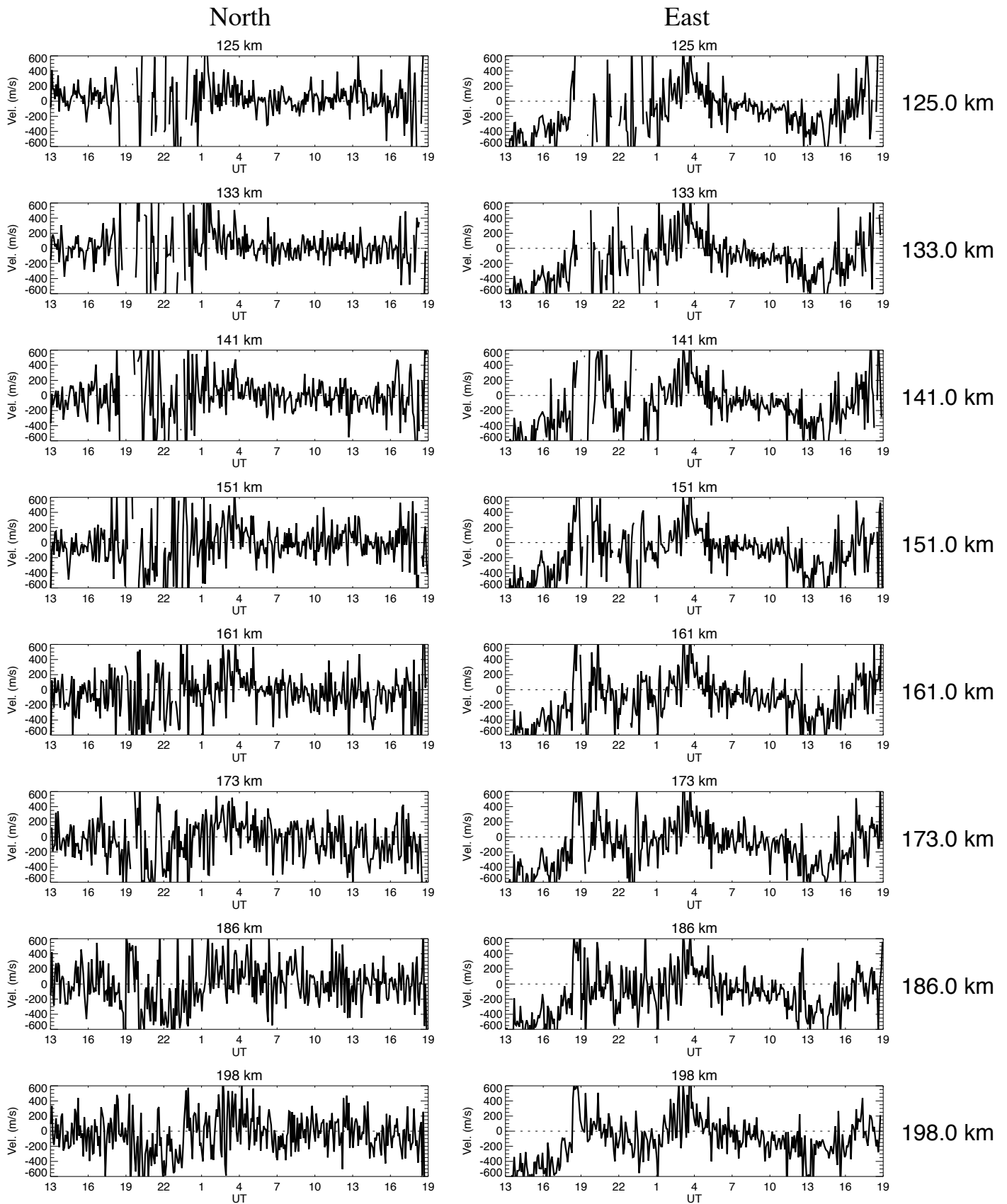
# Ion velocities obtained by CP-2 ESR starting on November 13, 2008



No of iteration is 100.  
Ti/Te is const. up to 95 km  
vmono081113esr.dat

plot\_vmono\_gup.pro  
5 min average done  
Tue Sep 14 13:28:03 2010

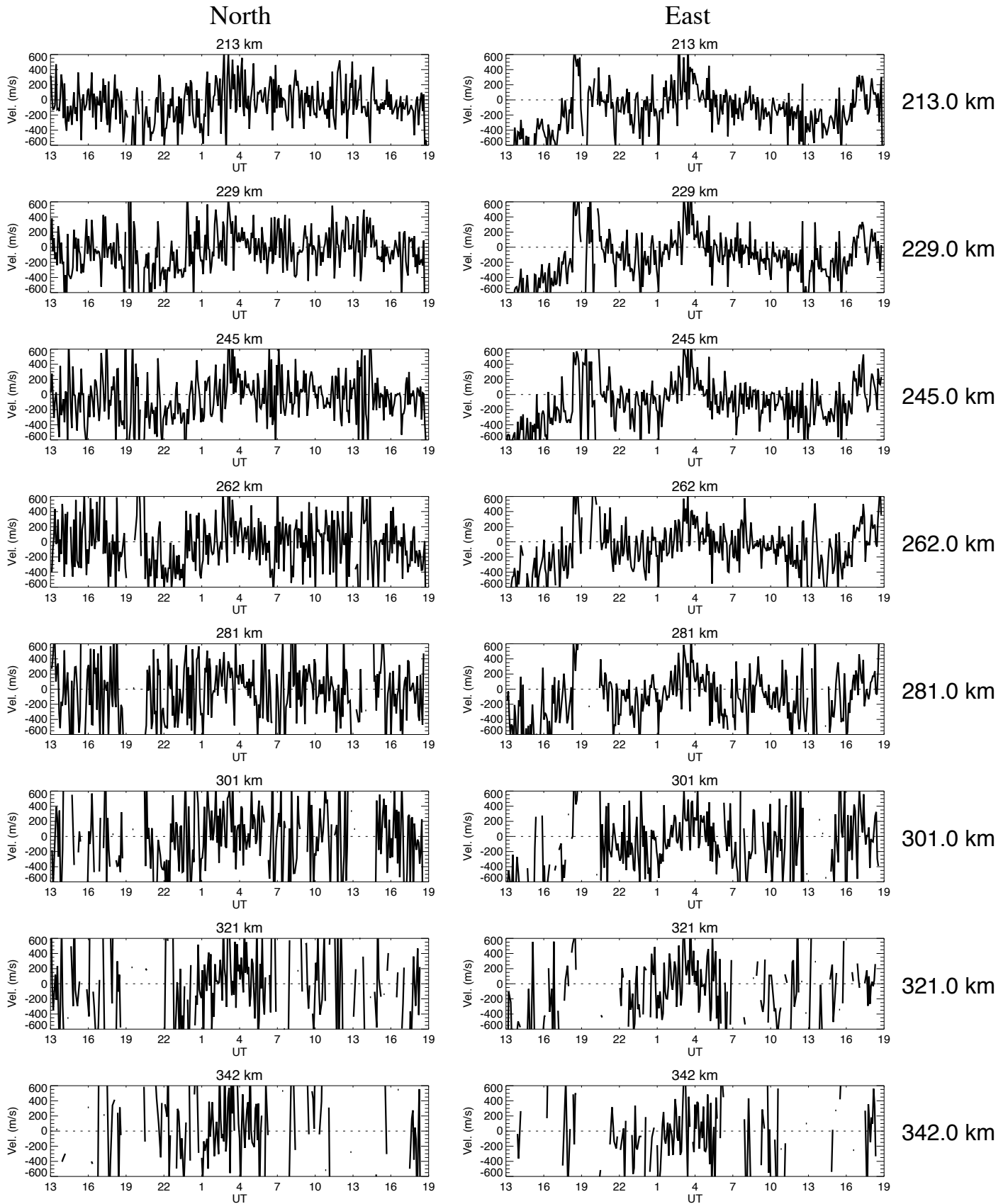
# Ion velocities obtained by CP-2 ESR starting on November 13, 2008



No of iteration is 100.  
Ti/Te is const. up to 95 km  
vmono081113esr.dat

plot\_vmono\_gup.pro  
5 min average done  
Tue Sep 14 13:28:03 2010

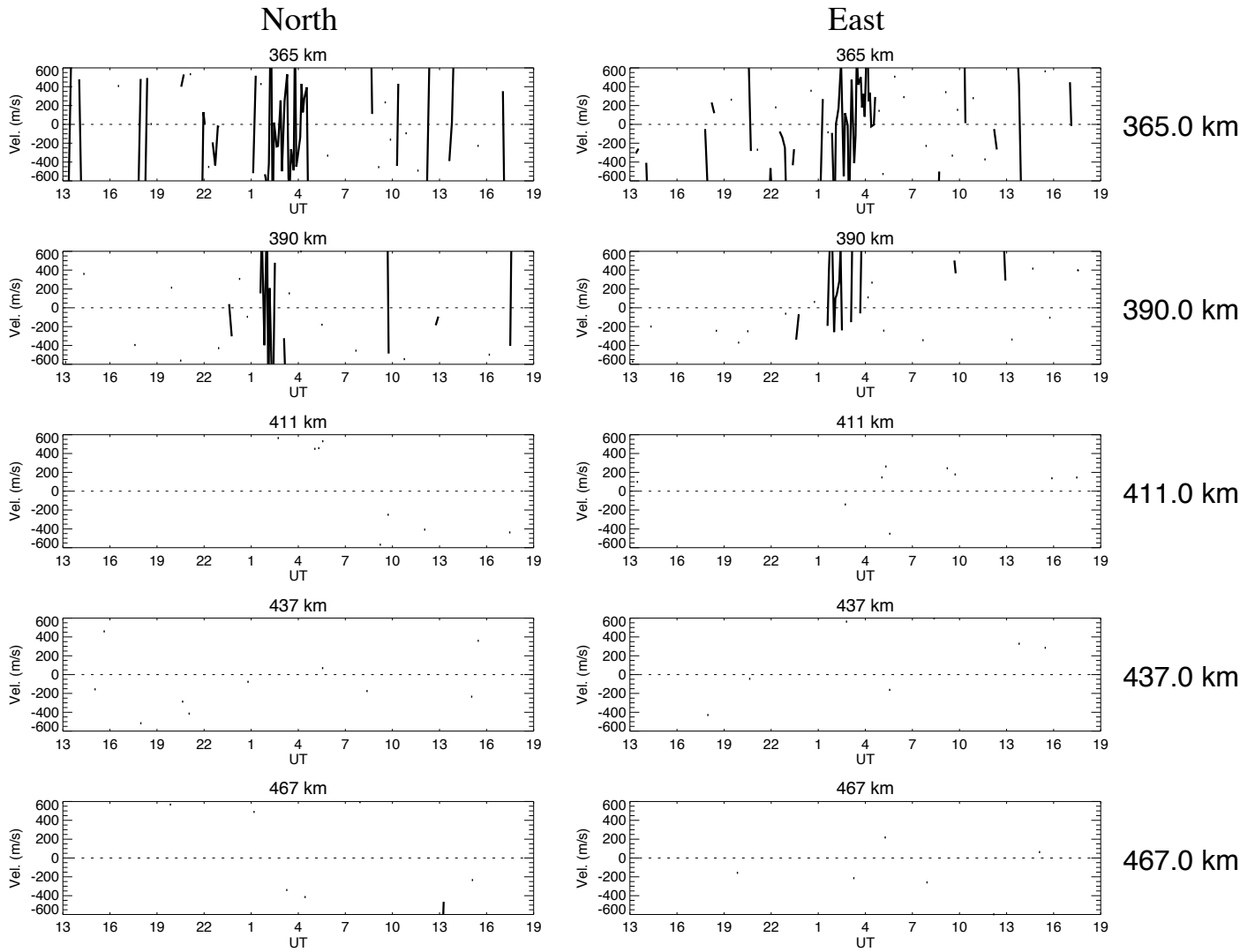
# Ion velocities obtained by CP-2 ESR starting on November 13, 2008



No of iteration is 100.  
Ti/Te is const. up to 95 km  
vmono081113esr.dat

plot\_vmono\_gup.pro  
5 min average done  
Tue Sep 14 13:28:03 2010

# Ion velocities obtained by CP-2 ESR starting on November 13, 2008



No of iteration is 100.  
Ti/Te is const. up to 95 km  
vmono081113esr.dat

plot\_vmono\_gup.pro  
5 min average done  
Tue Sep 14 13:28:04 2010