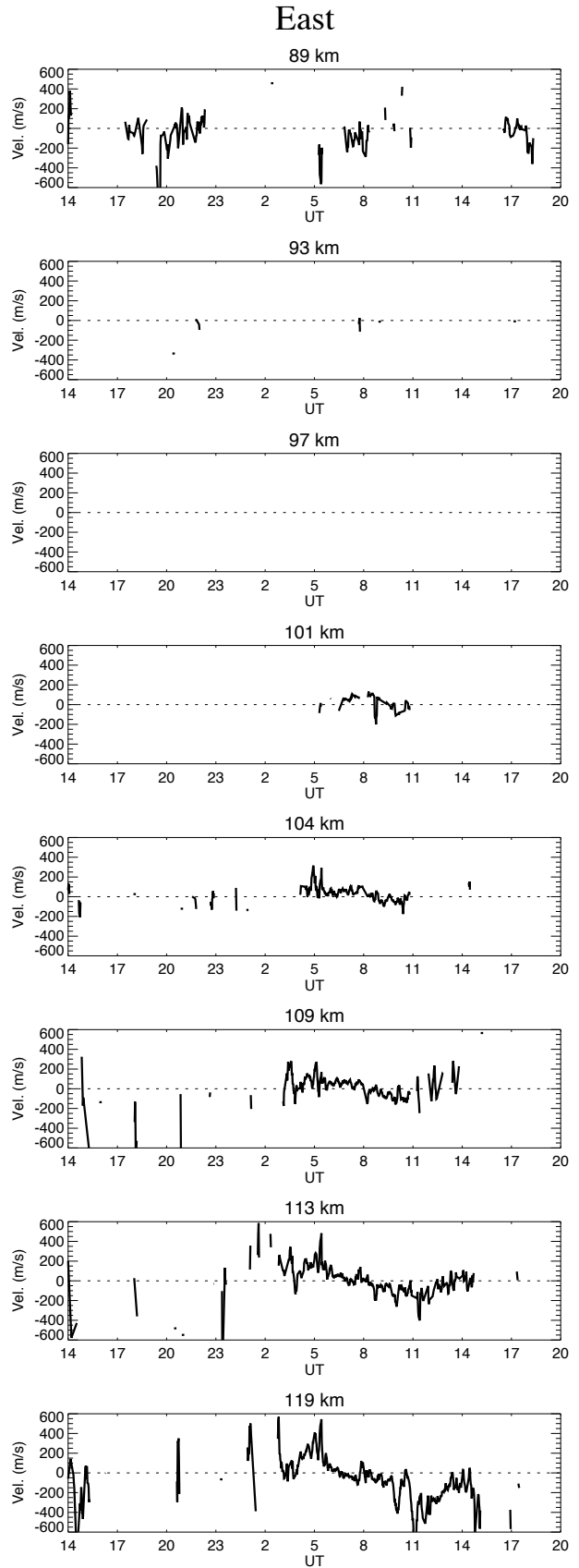
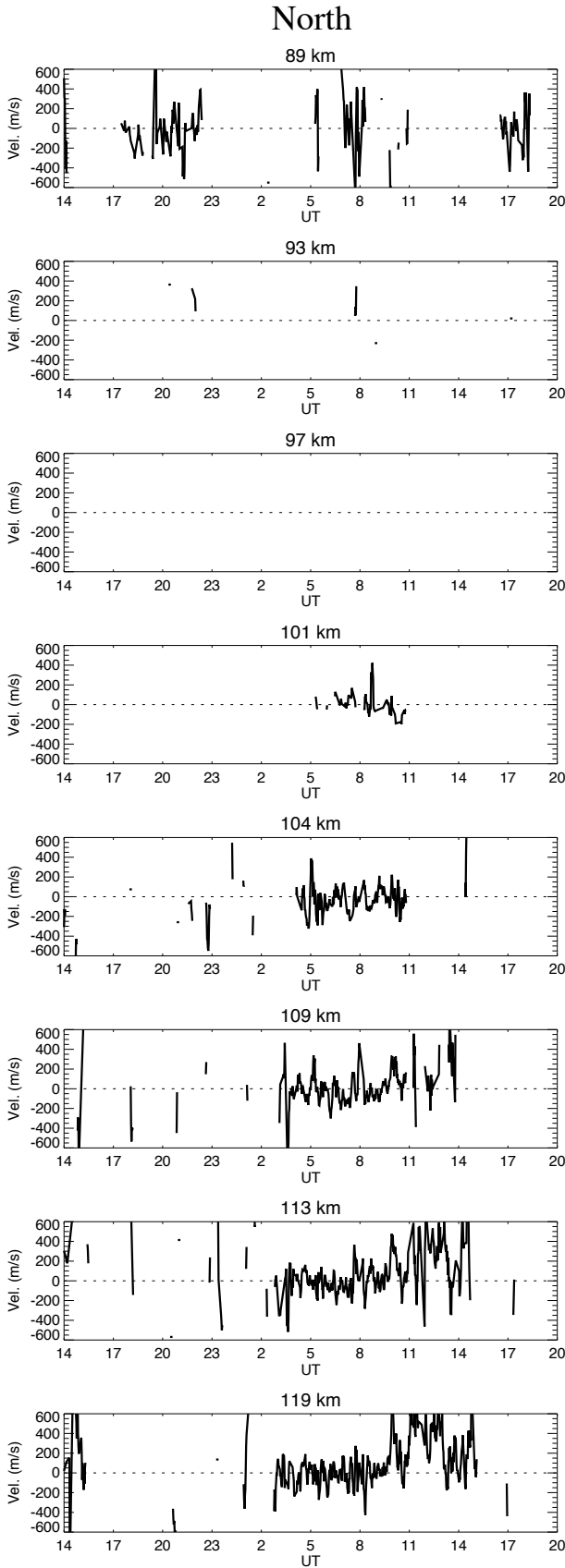


# Ion velocities obtained by CP-2 ESR starting on October 11, 2007



89.0 km

93.0 km

97.0 km

101.0 km

104.0 km

109.0 km

113.0 km

119.0 km

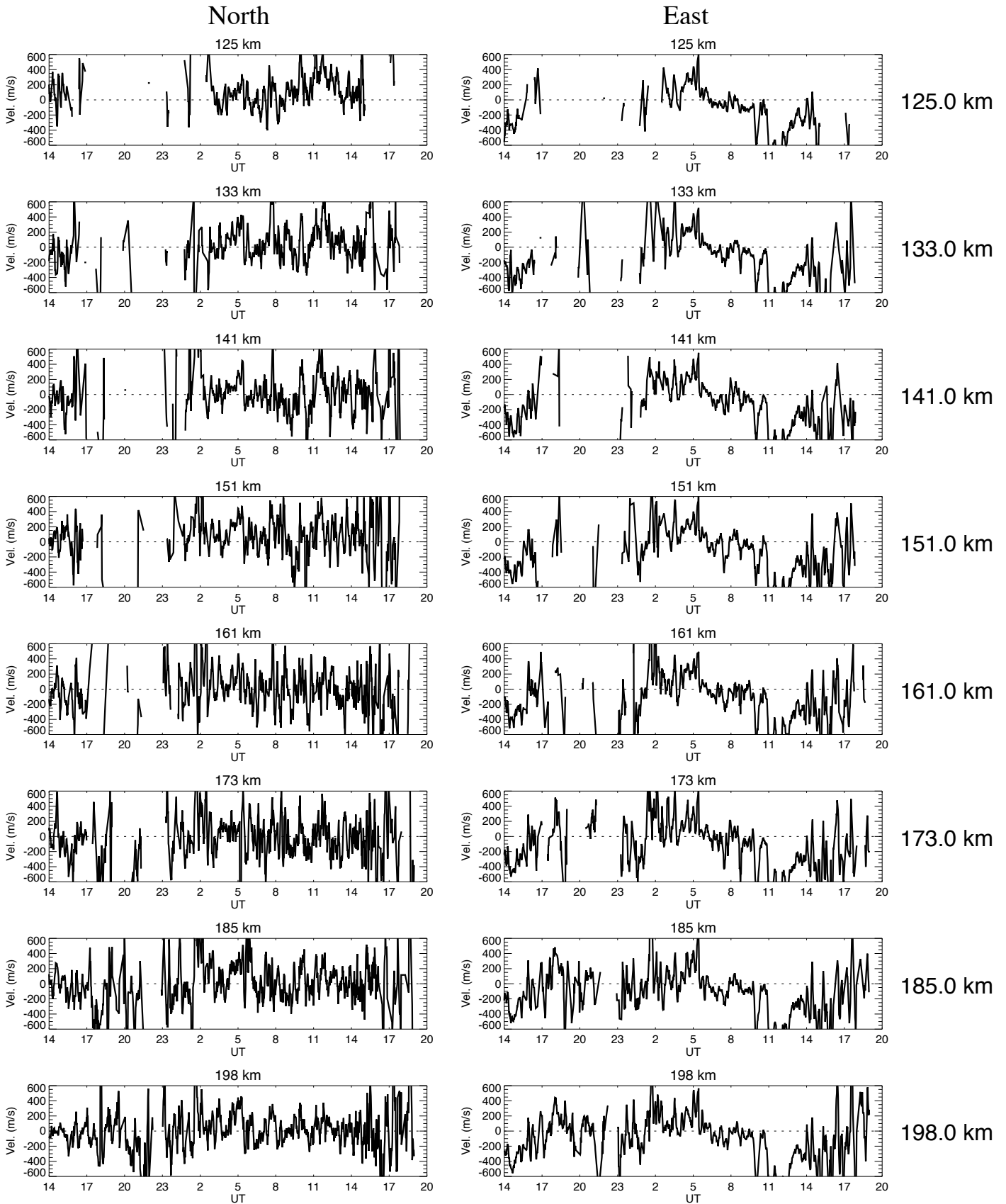
No of iteration is 100.  
Ti/Te is const. up to 95 km  
vmono071011esr\_ipy2.dat

Cycle time = 8.5 min

plot\_vmono\_gup.pro

Wed Sep 15 10:53:34 2010

# Ion velocities obtained by CP-2 ESR starting on October 11, 2007



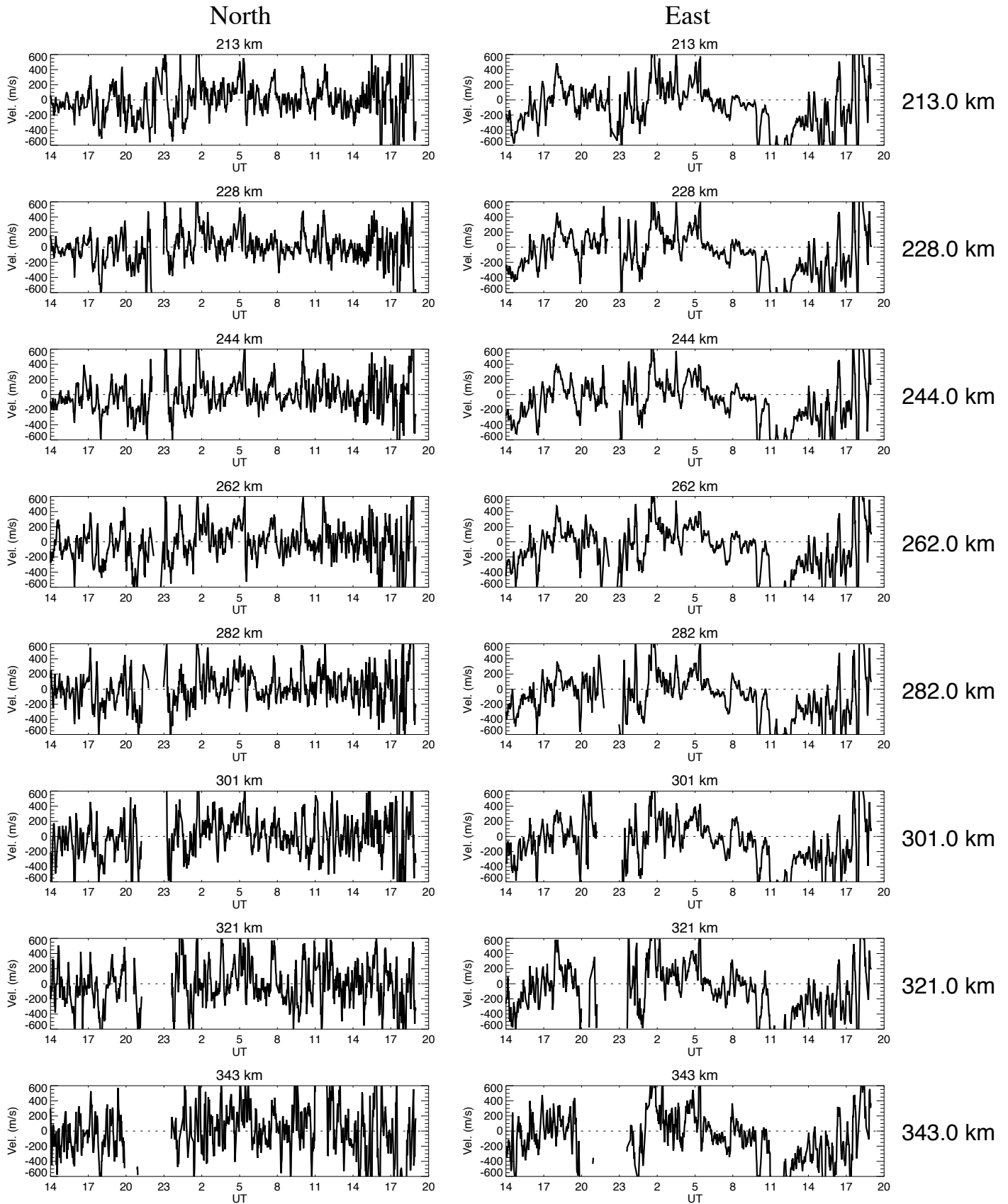
No of iteration is 100.  
Ti/Te is const. up to 95 km  
vmono071011esr\_ipy2.dat

Cycle time = 8.5 min

plot\_vmono\_gup.pro

Wed Sep 15 10:53:34 2010

# Ion velocities obtained by CP-2 ESR starting on October 11, 2007



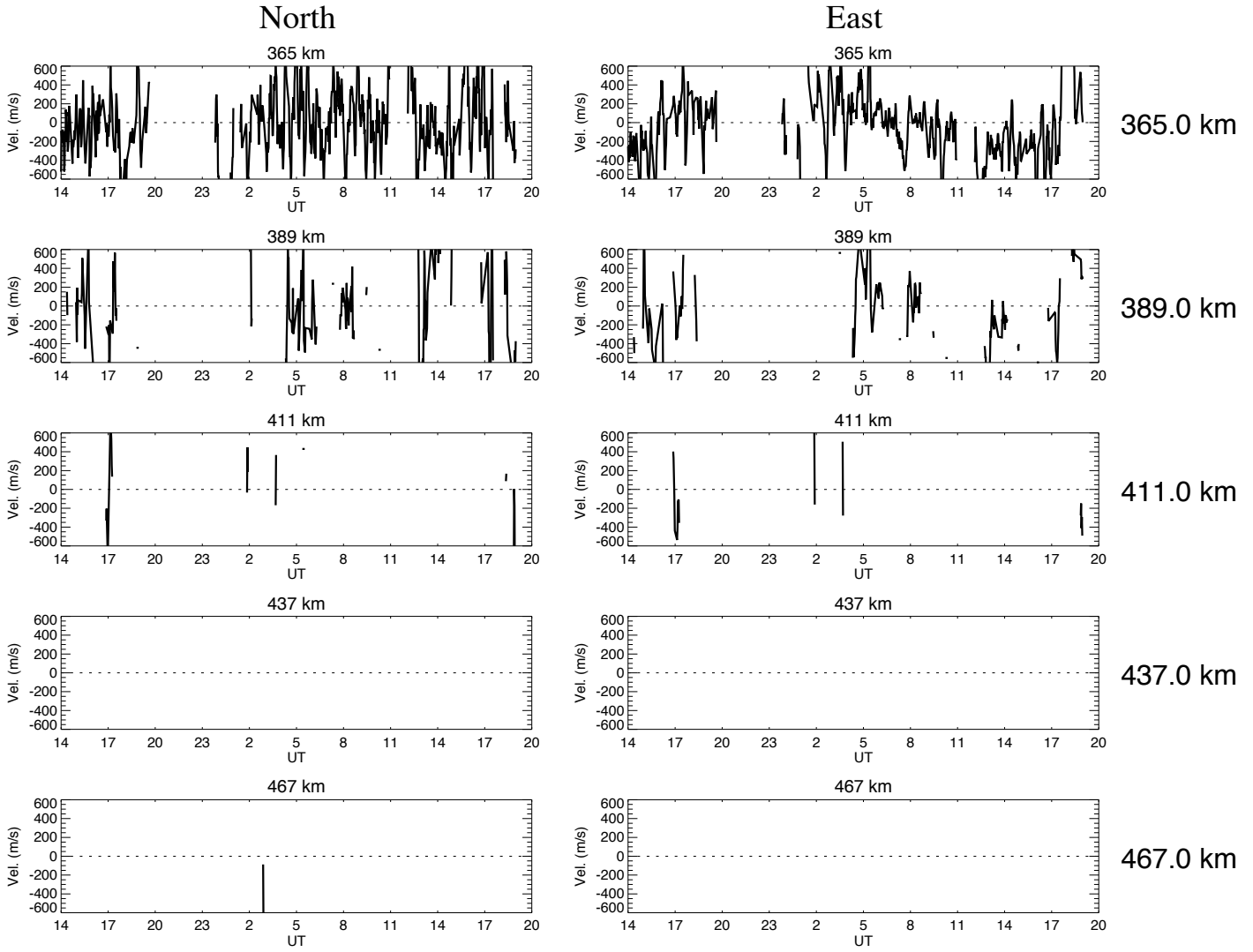
No of iteration is 100.  
Ti/Te is const. up to 95 km  
vmono071011esr\_ipy2.dat

Cycle time = 8.5 min

plot\_vmono\_gup.pro

Wed Sep 15 10:53:34 2010

# Ion velocities obtained by CP-2 ESR starting on October 11, 2007



No of iteration is 100.  
Ti/Te is const. up to 95 km  
vmono071011esr\_ipy2.dat

Cycle time = 8.5 min

plot\_vmono\_gup.pro

Wed Sep 15 10:53:34 2010