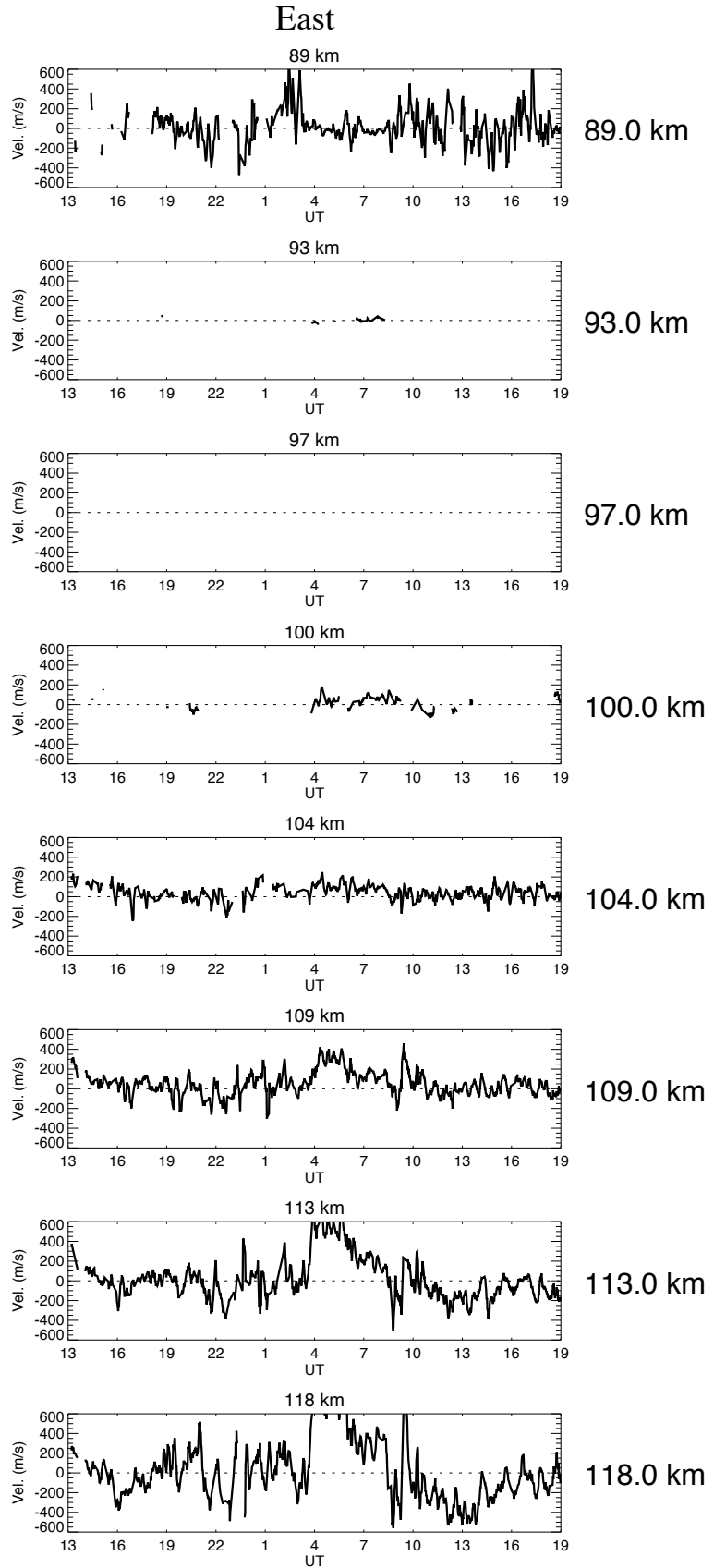
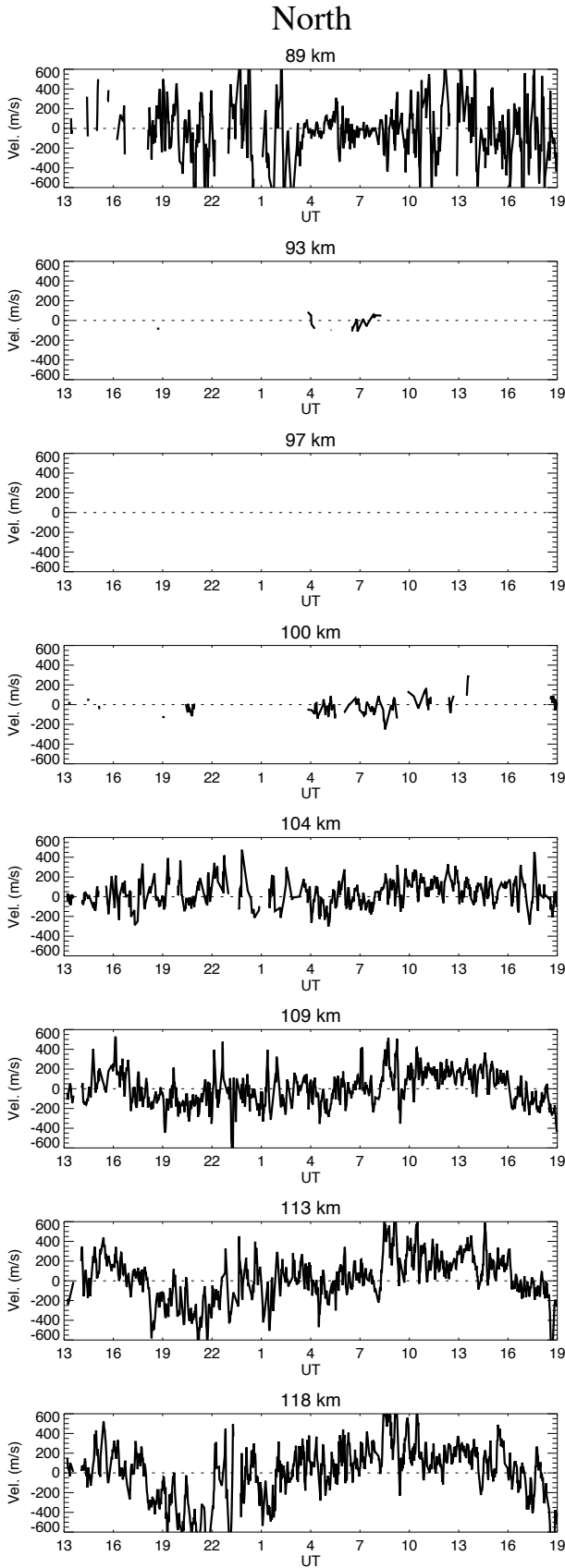


Ion velocities obtained by CP-2 ESR starting on April 24, 2008



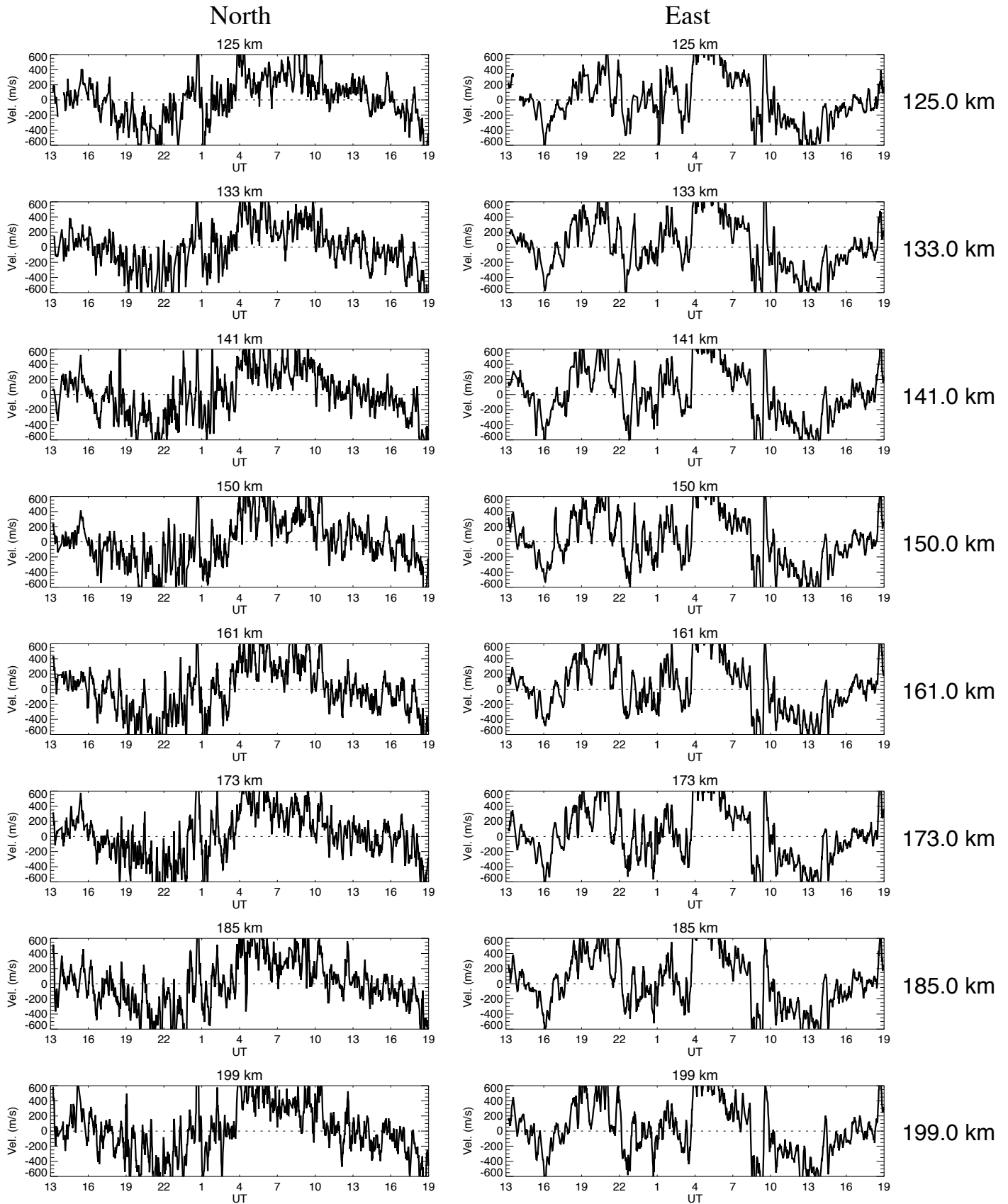
No of iteration is 100.
Ti/Te is const. up to 95 km
vmono080424esr_ipy2.dat

Cycle time = 8.5 min

plot_vmono_gup.pro

Wed Sep 15 10:58:16 2010

Ion velocities obtained by CP-2 ESR starting on April 24, 2008



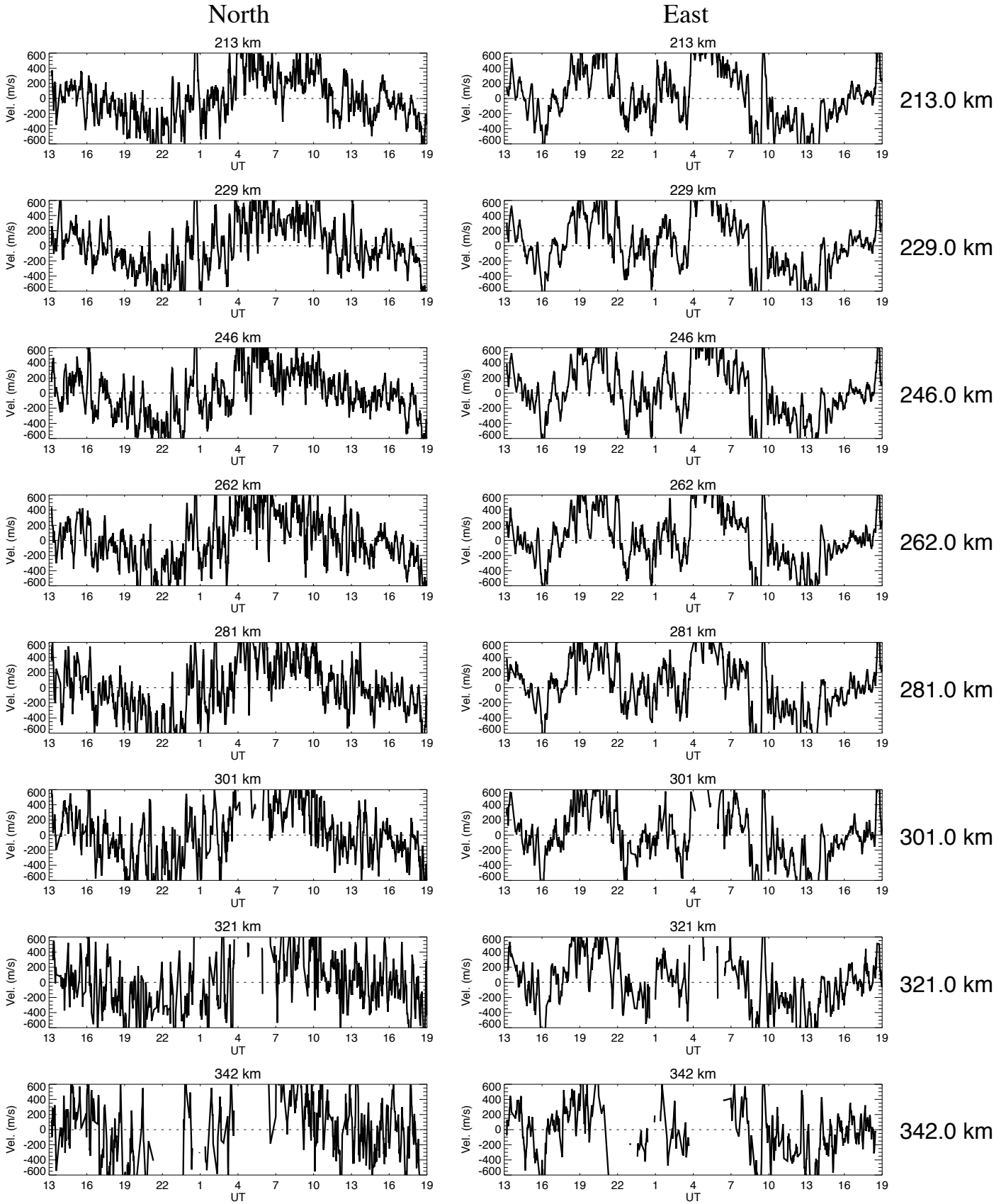
No of iteration is 100.
Ti/Te is const. up to 95 km
vmono080424esr_ipy2.dat

Cycle time = 8.5 min

plot_vmono_gup.pro

Wed Sep 15 10:58:16 2010

Ion velocities obtained by CP-2 ESR starting on April 24, 2008



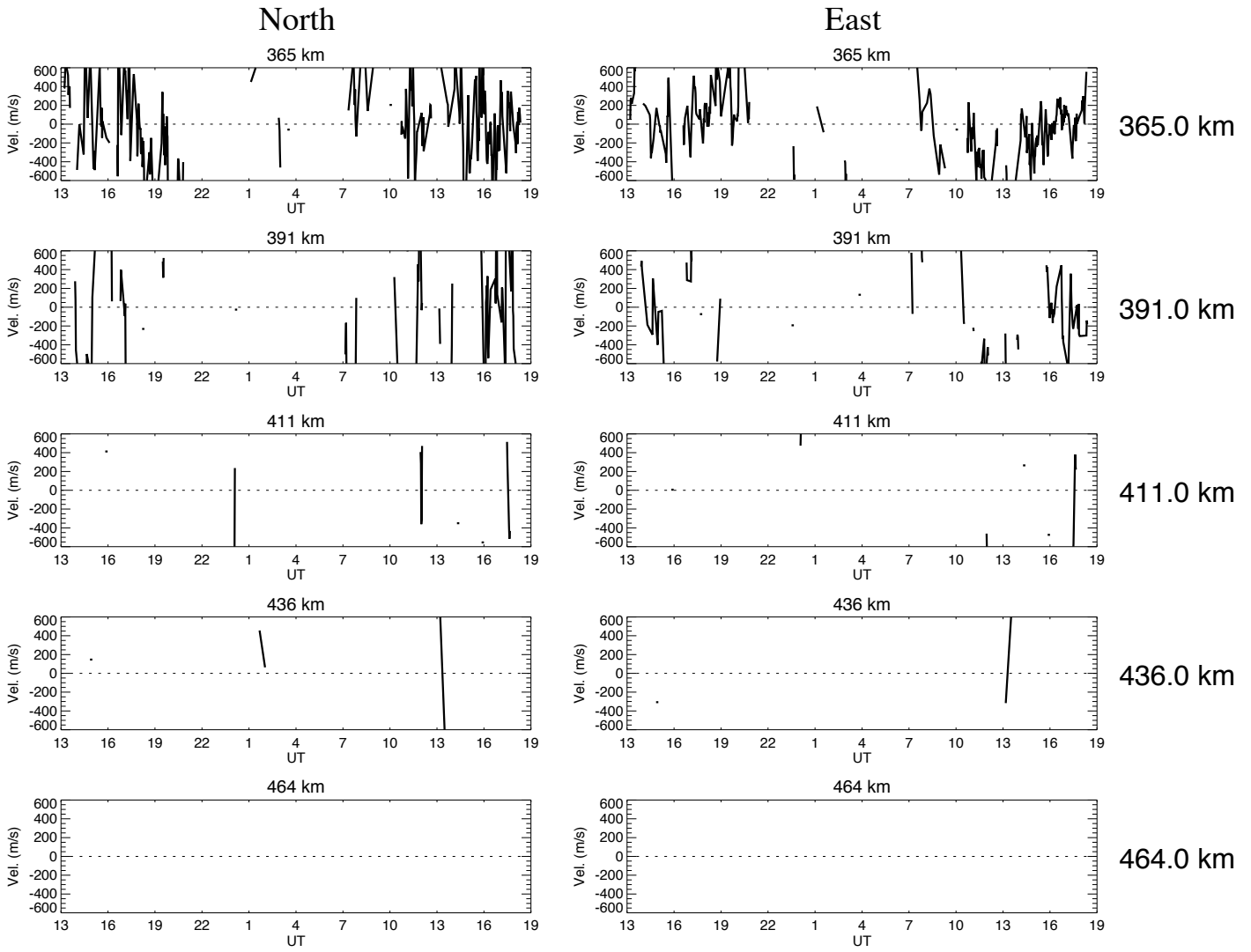
No of iteration is 100.
Ti/Te is const. up to 95 km
vmono080424esr_ipy2.dat

Cycle time = 8.5 min

plot_vmono_gup.pro

Wed Sep 15 10:58:16 2010

Ion velocities obtained by CP-2 ESR starting on April 24, 2008



No of iteration is 100.
Ti/Te is const. up to 95 km
vmono080424esr_ipy2.dat

Cycle time = 8.5 min

plot_vmono_gup.pro

Wed Sep 15 10:58:17 2010